

UCI UNION CYCLISTE INTERNATIONALE



BMX RACE



1.-2.9.2018



PRAHA
PRAHA
PRAHA

HA
GUE
GA
G

17
PRAHA - REPY

UAMK
MINISTERSTVO ŠKOLSTVÍ,
MLÁDEŽE A TĚLOVÝCHOVY

MPRA
MILNOSTLIVOST

STEHOVÁNÍ
LUMEN

AGROFERT

MAXOS
KATMAR

... CHUDOBA
SATPO
STAROSTA

project

[bikrosclubrepy](https://www.bikrosclubrepy.cz) www.bikrosclubrepy.cz

UCI King of Prague BMX 2018 5 & 6 Czech cup BMX

1st. - 2nd. September 2018

ÚAMK Bikrosclub ŘePY – Prague
Czech republic

Content

1. Introduction	3
2. Track Bikrosclub ŘePY	4
3. Prague	6
4. General Information	7
5. Location	8
6. Rules	9
7. Registration deadline for riders	10
8. Registration Fee	10
9. Classes	11
10. Number plates and Side plates	11
11. Trophies and prize money	11
12. Time Schedule Round 5& Race	12
13. Team area / Team tents	13
14. Parking	13
15. Catering	13
16. Shops	13
17. Camping	13
18. Hotel / B&B / Camping	14
19. Press	15
20. Map	16

UCI BMX KING OF PRAGUE 2018
CZECH CUP round 5 & 6



1. Introduction

We are very proud to welcome all the athletes, teams, officials, and spectators to the BMX track in the heart of Europe, Prague, Czech Republic. We are the biggest cycling club in Czech Republic with more than 240 members with 130 licensed riders from BMX, DH, XC, Track.

Our track hosted the 2012 and 2014 Czech national Championship. Also we hosted UCI King of Prague class C1 race in 2015 and 2016. In 2017 we host UEC BMX European cup.

The history of our club starts in 1987. Track was five times rebuilt in the past.

Last big rebuilt was in 2011 by Lukas Tamme compliant with all UCI rules, 8m wide first straight and first turn and the other straight and turns 6m. From that year we modernise track every year, with asphalt turns, new starting hill, finish line.



UCI BMX KING OF PRAGUE 2018
CZECH CUP round 5 & 6



2. Track Bikrosclub Řepy - Prague

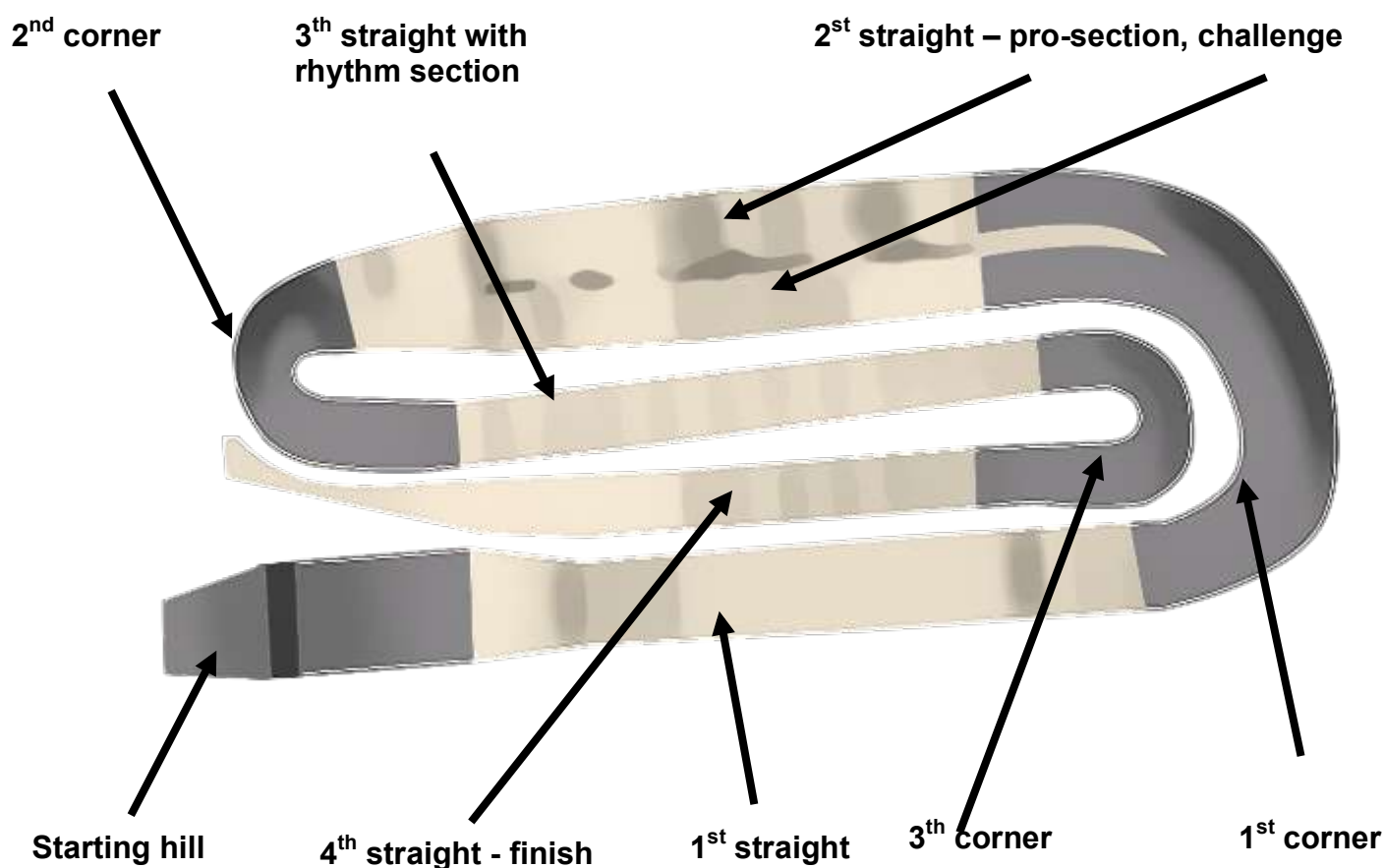
The track has a traditional starting hill with a ProGate system and one Pro Section in the second straight.

Track has a asphalt starting hill, finish line and turns, all straights are made of limestone.

- Challenge Track is 395 meters.
- For Junior and Elite with ProSection, the track is 405m with very fast time 32,5s.

Track data:

- The height of the starting hill is 3,5 meters, the width is 11 meters
- The track has 4 straights and 3 turns.



UCI BMX KING OF PRAGUE 2018
CZECH CUP round 5 & 6





UCI BMX KING OF PRAGUE 2018
CZECH CUP round 5 & 6



3. Prague, Czech Republic

Prague is the capital city of the Czech Republic. It is the 14th largest city in the European Union. It is also the historical capital of Bohemia. Situated in the north-west of the country on the Vltava river, the city is home to about 1.26 million people, while its larger urban zone is estimated to have a population of nearly 2 million. The city has a temperate climate, with warm summers and chilly winters.

Prague is home to several famous cultural attractions, many of which survived the violence and destruction of 20th-century Europe. Main attractions include the Prague Castle, the Charles Bridge, Old Town Square with the Prague astronomical clock, the Jewish Quarter, Petřín hill and Vyšehrad. Since 1992, the extensive historic center of Prague has been included in the UNESCO list of World Heritage Sites.

The city has more than ten major museums, along with numerous theatres, galleries, cinemas, and other historical exhibits. An extensive modern public transportation system connects the city. Also, it is home to a wide range of public and private schools, including Charles University in Prague, the oldest university in Central Europe.

More information: www.prague.cz



4. General Information

Organization:	ÚAMK Bikrosclub Řepy		
Address:	Ke Kulturnímu domu 439/14, Prague 6 – Řepy Czech republic 50°04'20.8" N 14°19'13.1" E		
Competition:	UCI King of Prague 2018		
Date:	1st. – 2nd. September 2018		
Contact Organization:	Lukáš Tamme Email: info@bikrosclubrepy.cz Website: www.bikrosclubrepy.cz/king-of-prague-2018 Facebook: Bikrosclub Řepy Phone: +420 777 113 886		
National Federation:	ČSC: www.ceskysvazcyklistiky.cz		
Parking:	At a walking distance of about 200 meters there is a free, amply parking space for riders and visitors. GPS: 50.074258, 14.323304		
Camping:	The camping site will be open from Friday 31 st August 16:00h to Sunday 2 nd September 18:00h. Including, water, toilets, no electricity.		
Registration Fee:		Saturday	Sunday
	• Challenge classes & Cruisers	200,-CZK	200,-CZK
	• Junior classes	1 000,-CZK	1 000,-CZK
	• Elite Classes	1 500,-CZK	1 500,-CZK

READ THE TERMS & CONDITION AND INVITATION

www.bikrosclubrepy.cz/wp-content/uploads/2017/04/Terms-Conditions.pdf

5. Location

From Prague Airport:

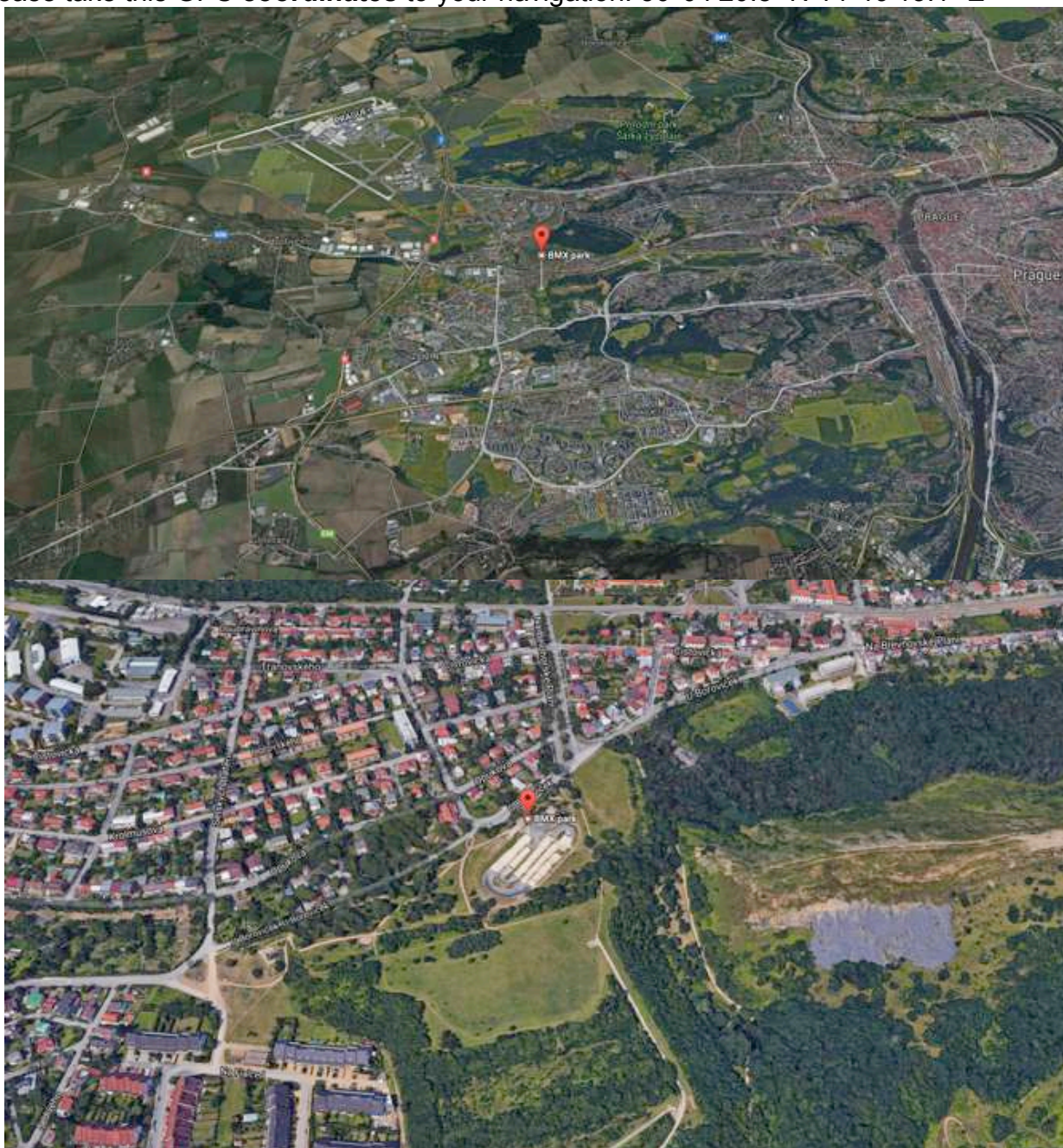
Take the bus 119 to the Divoká Šárka -> bus 191 to the Sídliště petřiny -> bus 164 to the Bílá Hora

or

Take the Bus 119 to the Divoká Šárka -> tram 25 to the Bílá Hora

By car:

Please take this GPS **coordinates** to your navigation: 50°04'20.8" N 14°19'13.1" E



UCI BMX KING OF PRAGUE 2018
CZECH CUP round 5 & 6



6. Rules

UCI King of Prague / Czech cup BMX is open to any rider from any country with a national license, in compliance with the UCI regulations. There is no limit on the number of riders from one country that can be registered.

The race will be run under the Czech BMX rules 2018 regulations. Championship riders can score UCI points for their country ranking. **Saturday** is a **C1** contest, **Sunday** will be **C1**.

PLEASE BEWARE: in case of special conditions (weather, wind or else) or a high number of participants, the UCI BMX Commission allows the PCP in agreement with the UCI Technical delegate to reduce the number of moto's. This can only apply for challenge classes and never for championship classes.

Challenge riders are not allowed to have a number on their jersey. Career numbers on shirts are only allowed for Championship riders.

Challenge and Championship riders are not allowed to have UCI logo or rainbow stripes on bicycles or clothing, except for Junior and Elite World Champions.

Jeans are not allowed in all classes.

Only riders aged 13 and older can use clip pedals.

Front and side plates: colours and sizes as per UCI rule book article 6.1.072. Since photo finish system is utilized, each bicycle – entered competition must display a lateral number plate located just behind the steer tube. The number shall be black with a white background.

The riders must display the number assigned to him by UEC Race Administration. It is the responsibility of the rider to check he has the correct number on his plate. No correct number or no correct plate means: no authorization to start and then REL.

Riders do not receive number plate and side plates!!!!!!

7. Registration deadline for riders

All registrations & payments for Junior and Elite riders must be made through their own national BMX federation. This ensures that registrations & payments are coordinated.

Deadline registration for federation: August 27th 2018.

Late registration after deadline is possible on site for double entry fee!

REGISTRATION FORM: HERE

http://www.bikrosclubrepy.cz/wp-content/uploads/2017/03/ENTRY_FORM_King-of-Prague-2018-2.xls

National federations must mail their registrations to: info@bikrosclubrepy.cz

Payment of the registrations by National federations should be made to the following account number:

Bikrosclub Řepy

Bank: Komerční Banka

IBAN CZ1301000000271577150227

BIC / SWIFT kód KOMBCZPPXXX

Comment: "King of Prague + country or name of rider"

Or cash at the registration day of racing in Czech Krona

We ask the RIDERS to bring a **bank statement** (ask your federation), showing when the payment was made by bank transfer, when they confirming registration. This to avoid any problems.

8. Registration Fee

Classes	Saturday	Sunday
Challenge classes & Cruisers	200,-CZK	200,-CZK
Junior classes	1000,-CZK	1000,-CZK
Elite Classes	1500,-CZK	1500,-CZK

9. Classes

UCI King of Prague / Czech cup BMX

Championship classes:

- Men Elite Male riders 19 years and older
- Women Elite Female riders 19 years and older
- Men Junior Male Riders 17 and 18 years' old
- Women Junior Female riders 17 and 18 years' old

Challenge classes:

- Boys & Girls: 6, 7, 8, 9, 10, 11/12, 13/14, 15/16
- Combined classes if less than 5 riders
- Men: 17+
- Cruisers: Top 17+, Masters 30+

10. Number plates and side plates + Transponder

The organization will NOT provide number plates and side plates. Riders have to bring their own and apply them according the rules. The riders must display the number assigned to him by UEC Race Administration.

You can borrow Transponder at registration for 250 CZK/race or you can bring your own from Mylaps system

11. Trophies and Prize money

For the Championship Classes:

Only Championship riders who come in 1st to 3rd place are obliged to attend the award ceremony. The other riders (4th-8th place) can pick up their prize money behind the stage, on presentation of their UCI license. All the prize money that has not been collected right after the podium ceremony will not be given on a later moment.

For the Challenge Categories:

Cups for places 1 - 5 for both rounds award ceremony.

Prize money:

	ELITE MEN	ELITE WOMEN	JUNIOR MEN	JUNIOR WOMEN
PLACE	€	€	€	€
1	800	800	350	350
2	400	400	175	175
3	200	200	125	125
4	175	175	75	75
5	150	150	50	50
6	125	125	40	40
7	100	100	30	30
8	75	75	20	20

UCI BMX KING OF PRAGUE 2018
CZECH CUP round 5 & 6



12. Time Schedule

Friday afternoon:

Registration: 16:00 - 19:00

Training all classes:

16.00 - 16:55 h	Bloc 1	20" (6 years to 12 let)
17.00 - 17:55 h	Bloc 2	20" (13 years to 17+) 24" Cruiser,
18.00 - 18:30 h	Bloc 3	Women Junior and Elite
18.35 - 19:15 h	Bloc 4	Men Junior and Elite

Saturday:

Registration: to 9,30 h

Warm up Bloc 1: 9,00 – 9,30 (10min free, 20min gate)

Warm up Bloc 2: 9,30 – 10,00 (10min free, 20min gate)

Warm up Bloc 3: 10,00 – 10,25 (10min free, 20min gate)

Warm up Bloc 4: 10,30 – 10,55 (10min free, 20min gate)

Race start: 11,00 3 moto's Bloc 1+2+3+4, following by finals all classes 1/4, 1/2, final B, A

Prize award all classes immediately after the finals

Sunday:

Registration: to 8,30 h

Warm up Bloc 1: 8,00 – 8,30 (10min free, 20min gate)

Warm up Bloc 2: 8,30 – 9,00 (10min free, 20min gate)

Warm up Bloc 3: 9,00 – 9,25 (10min free, 20min gate)

Warm up Bloc 4: 9,30 – 9,55 (10min free, 20min gate)

Race start: 10,00 3 moto's Bloc 1+2+3+4, following by finals all classes 1/4, 1/2, final B, A

Prize award all classes immediately after the finals

According to number of entries this general program can be modified and presented

Time schedule with reservation

13. Team area / Team tents

Next to the track

The team tent places are, according to the UEC rules, 3 x 6 meters.

14. Parking

Normal parking is situated 200 meters from the BMX-track, just outside of the circuit. This is free of cost. ENTRY TO PARKING 50.074258, 14.323304

15. Catering

There will be several catering stands, where you can buy hot and cold food and drinks. With open hours from 8:00h to 22:00h. Just outside the site there is a bakery, a supermarket and a petrol station just 5 minutes away.

16. Shops

A BMX Village will be set up during the UEC BMX European Cup.

If you would like your shop or entertainment to be present during the European BMX season, send an e-mail to: info@bikrosclubrepy.cz reserve your space in the BMX Village or ask for more information. Mention your shop name, the person responsible, your time of arrival and how much space you need.

17. Camping

Bikrosclub Řepy offers the option of camping at the event. The campsite is situated next to track with and has all utilities - toilets, showers. Mobile homes and caravans / tent can park on our campsite. Entry to camp from street U Boroviček: 50.073054, 14.320782

REMEMBER THE ENVIRONMENT:

Please use ample number of the bins provided for your waste! Septic toilets must not be emptied on site. The accommodation is **not** suited for this.

Use of caravan, camper, (team) tents at the campsite / accommodation site is wholly at your own risk.

ÚAMK Bikrosclub Řepy and the city of Prague accept no liability for thefts or damage occurring on the site, during the race, in the car parks or on the track campsite.

Please respect the environment and dispose of your waste responsibly

18. Hotel/B&B/Camping

These are the main hotels, camping and B&B around BMX track:

Hotel Energie

Plzeňská 276/298, Prague, 150 00, Czech Republic

www.hotelenergie.cz

Hotel Golf

Plzeňská 103/215a, Prague, 15000, Czech Republic

www.hotel-golf.cz

Pension Wertheim

Karlovarská 51 - Bílá Hora, Praha 6

www.hotelwertheim.cz

Hotel U Hvězdy

Bělohorská 151/259, Praha 6

www.hoteluhvezdy.cz

Hotel Fortuna West

Mrkvičková 2, Prague, 163 00, Česká republika

www.hotelfortunawestprague.com

19. Media

Journalists who want to obtain a press accreditation, can request this by sending an e-mail to info@bikrosclubrepy.cz

During the event BIBs will be distributed by the UEC Press Officer. Accredited members of the press also benefit from a special car park close to the track.

The number of photographers permitted at the track is limited to 5.

Both the UCI and the organization will favour said medium.

Mention the following details to email:

- First name and surname
- Media
- Website
- Press card as an attachment

20. Map



TRACK

50°04'20.8" N 14°19'13.1" E

TEAM

50.073054, 14.320782

PARKING

50.074258, 14.323304

UCI BMX KING OF PRAGUE 2018
CZECH CUP round 5 & 6

