

BEM Toolbox3 version 3.21.10 Release and Installation Notes.

Document version: 23 April 2021.



This Toolbox update:

- Supersedes all previous versions of the Toolbox.
- Is compatible with both BEM version 10 and 11 streams.
- Is applicable for all Associations.
- Contains specific changes for Australian AusCycling requirements and therefore for compatibility and compliance with AusCycling event sanctioning, Australian users need to be running BEM version 10.21.3 or 11.21.3 as a minimum.

Contents.

Changes from Toolbox3 version 3.21.9 to 3.21.10.....	2
Changes from Toolbox3 version 3.21.8 to 3.21.9.....	2
Changes from Toolbox3 version 3.21.5 to 3.21.8.....	2
Changes from Toolbox3 version 3.21.2 to 3.21.5.....	2
Changes from Toolbox3 version 3.21.0 to 3.21.2.....	3
Changes from Toolbox3 version 3.10.3 to 3.21.0.....	3
Installation of Toolbox Version 3.21.10.	5
Environment Details	9

Changes from Toolbox3 version 3.21.9 to 3.21.10

The update to 3.21.10 corrects a reporting error that can occur when processing on-line entries and the Club in the on-line entries doesn't match any Club in the event.

Changes from Toolbox3 version 3.21.8 to 3.21.9

The update to 3.21.9 corrects two long standing but only recently discovered issues:

- When creating a new .bem event file and the reference event is set for 2 Time Trial runs, the new event will be incorrectly set for 1 Time Trial run.
- When creating a new .bem event file without using a reference event, an error can occur when adding the first new Club to the template.

Changes from Toolbox3 version 3.21.5 to 3.21.8

- For Australian users:
 - Conformance with the heading format change made by AusCycling to their TidyHQ Club Membership export.
As such Toolbox version 3.21.8 becomes the minimum requirement to import AusCycling memberships details from TidyHQ into a BEM Rider List using the procedure in the AusCycling document "BMX Clubs using BEM"
 - Update when refreshing an OSM based BEM Rider List with a TidyHQ export so that:
 - The membership number is always updated from the BMXA number to the AusCycling number irrespective of the expiry date.
 - Improved management of multiple records with the same membership number in the TidyHQ export.

Changes from Toolbox3 version 3.21.2 to 3.21.5

- When adding entries to a .bem event from an on-line entry system export, adds a new operator prompt when a rider's Club in the on-line entry does not exist in the event file.

For this scenario the operator can choose to ignore, select another club that does exist in the event or add the missing club to the event.

The following changes are applicable when Australia selected as the Association.

- Allows an EntryBoss online entry file to be used to refresh an existing Rider List file. I.e. update an OSM Rider List for members who have renewed with their new AusCycling membership number, renewal date and membership level.
- Adds missing BMXA "International Rider" and the EntryBoss generic "Race" membership levels to the event eligibility checking against the event sanctioning level.
- Corrects the operator warning when an AusCycling membership level is not valid for the event as previously the wrong rider details could be shown.
- Corrects a processing error that can occur when checking transponder subscriptions when copying entries to a .bem event file.
- Corrects a processing error when checking UCI IDs when copying EntryBoss entries to a .bem event file.

Changes from Toolbox3 version 3.21.0 to 3.21.2

Note that all changes in this upgrade are applicable with Australia selected as the Association.

- Adds a new feature to enable import of online entries for AusCycling events using the EntryBoss system to either a BEM Event or Rider List file.
- Adds a new feature enabling import of Club level membership exports from the AusCycling TidyHQ database to create a new or refresh an existing BEM Rider List file.

This facility will allow Clubs to update their existing OSM based Rider List for their members who have renewed with AusCycling.

- Added additional transponder number format checking and auto correcting as a work around to offset the lack of any transponder number formatting rules in AusCycling's TidyHQ membership database.

E.g. In this example the transponder has the unwanted "(20 Inch) removed"

Note that you can edit the transponder number if required

Where the auto-correction is not possible, the operator can enter the valid transponder number in the green box then click the corresponding "Use This" button.

- Expands on the Membership Level checking to include legacy Cycling Australia, BMXA and MTBA memberships.

Changes from Toolbox3 version 3.10.3 to 3.21.0

Note that Pump Track facilities require BEM 3.11.x versions for which an upgrade fee is applicable.

- For Australian users
 - The Rider List file will be encrypted to comply with AusCycling security requirements.
 - Membership type applicability to enter and event is now managed by selecting the relevant AusCycling Class of event (sanctioning) level in the Event Details form.
 - Menu selections have been provided in anticipation of processing AusCycling membership database and AusCycling event exports however those export types are not available from AusCycling as of November 2020.

- Updated the event template to version 47 to support new features allowing operators to add an Event Location and Event or Sponsor web link to be shown in html and selected print reports.

- A new facility is added to check and update rider's UCI IDs in either on-line entry files or a BEM event file via API access to the UCI database. Note that this check can also be performed when copying on-line entries into an event file.

- Added a new source type to process Red Bull Pump Track on-line entries.
- When refreshing an existing Rider List, individual details of new entries and renewed memberships are logged in the exception file.
- Added a new feature to update rankings in a .bem event file from a .bsr series file based on Class Type. First use for the new tie-break requirements introduced for the 2020 BMX Australia National Series.

Installation of Toolbox Version 3.21.10.

1. All instances of all versions of the BEM Toolbox must be **MUST BE UNINSTALLED BEFORE INSTALLING** this update.
This includes limited distribution test versions

DO NOT SKIP THIS STEP AS THE INTEGRITY OF THE UPGRADE WILL BE COMPROMISED AND UNPREDICTABLE OPERATION GUARANTEED.

If you do not understand this requirement, please e-mail lyndon.downing@bigpond.com or perhaps ask a teenager for assistance.

Screen shots are taken from Windows 7 Pro and may vary depending on the version of windows installed.

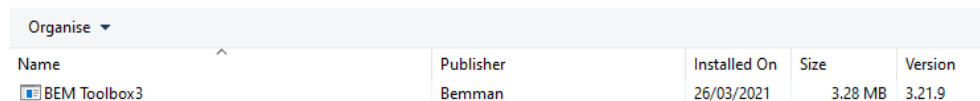
Click Start, Control Panel, Programs and Features (Add and Remove Programs in Windows XP)

Note that details will differ depending on the Toolbox version currently installed. I.e.

Toolbox Version	Name	Publisher
3.2.x	BEM Toolbox3	Bmx Event Manager
3.3.x and above	BEM Toolbox3	Bemman

[Uninstall or change a program](#)

To uninstall a program, select it from the list and then click Uninstall, Change or Repair.



The screenshot shows the Windows 'Programs and Features' window. At the top, there is a search bar and an 'Organise' dropdown menu. Below, a table lists installed programs. The first entry is 'BEM Toolbox3' by 'Bemman', installed on '26/03/2021', with a size of '3.28 MB' and version '3.21.9'.

Name	Publisher	Installed On	Size	Version
BEM Toolbox3	Bemman	26/03/2021	3.28 MB	3.21.9

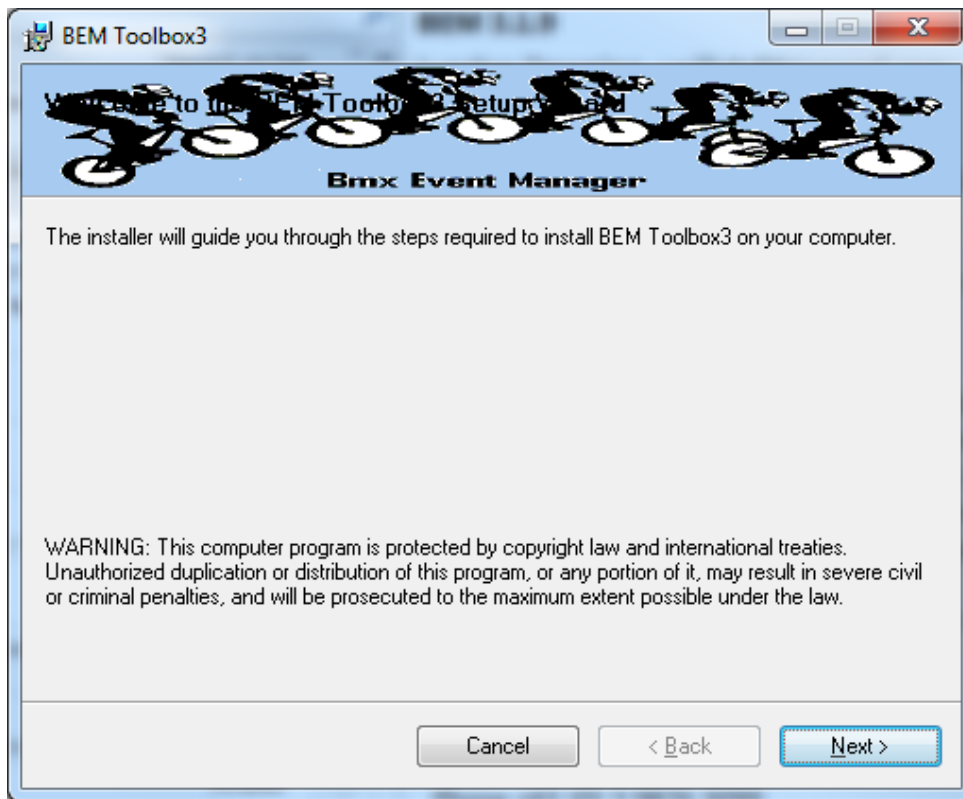
Select BEM Toolbox3, Right click then click on Uninstall.

Answer Yes to any prompts required to complete the removal of the earlier version.

Repeat to remove any other instances of BEM Toolbox3 if more than one version was installed.

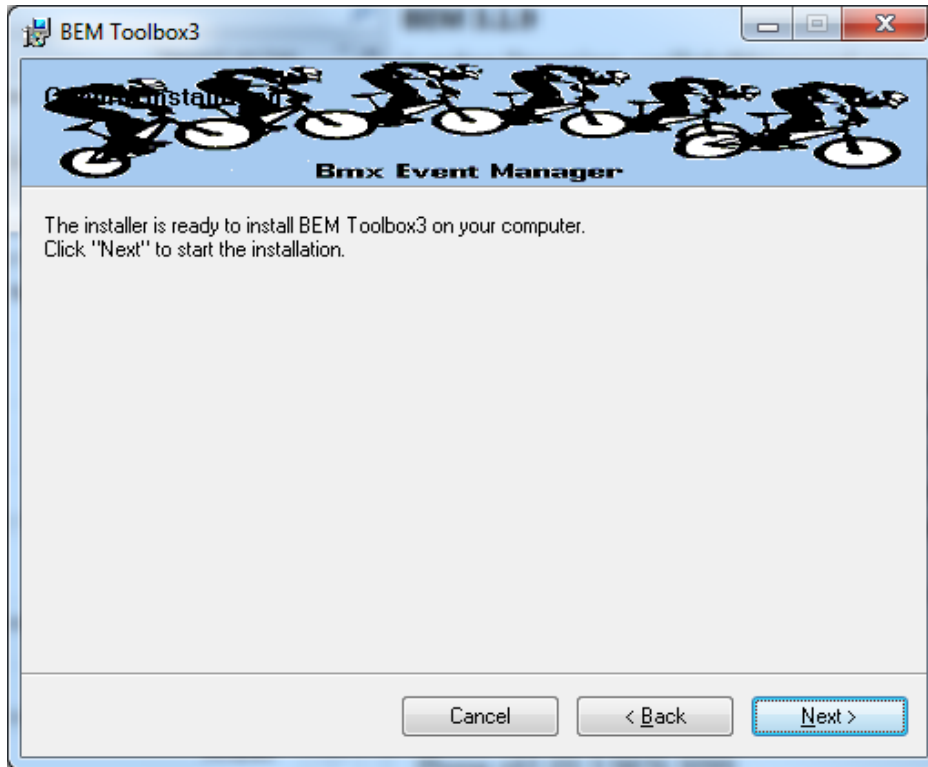
2. Download and save the **1a Toolbox Production 3-21-10.zip** file from <https://www.moto-sheets.com/index.php?p=manuals>
3. Unzip and save the **1a Toolbox Production 3-21-10.msi** file contained in the **1a Toolbox Production 3-21-10.zip** file.

4. Double click on the Toolbox Project.msi file to start the installer.

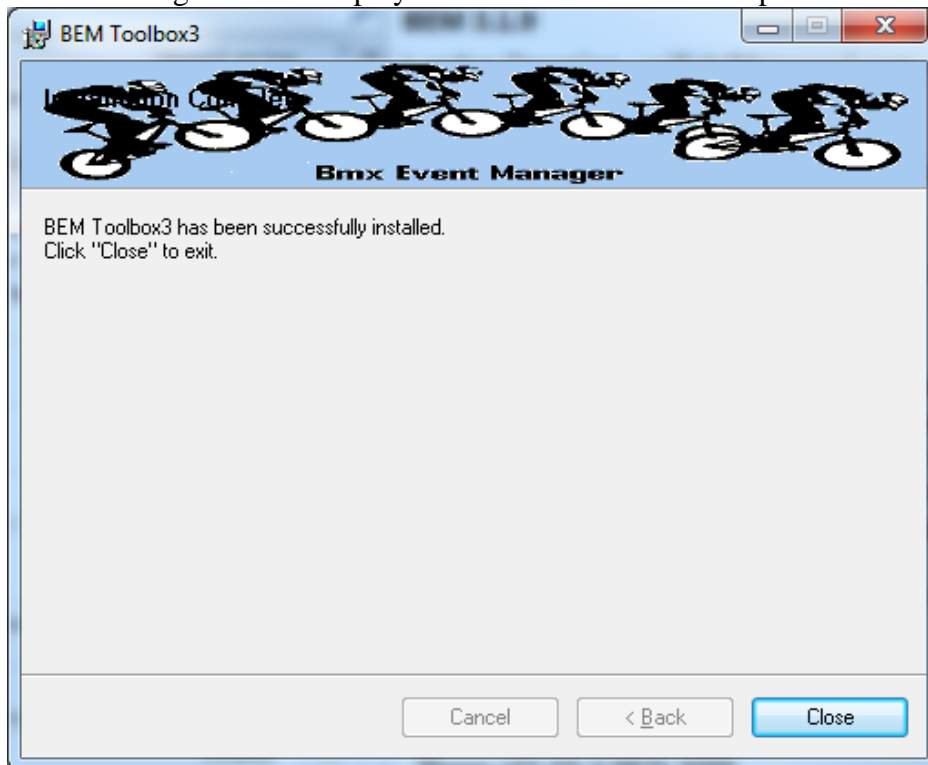


If you accept the copyright and unauthorised distribution conditions, click Next to continue the installation.

5. Click Next to start the installation.



6. The following screen is displayed when installation is completed.

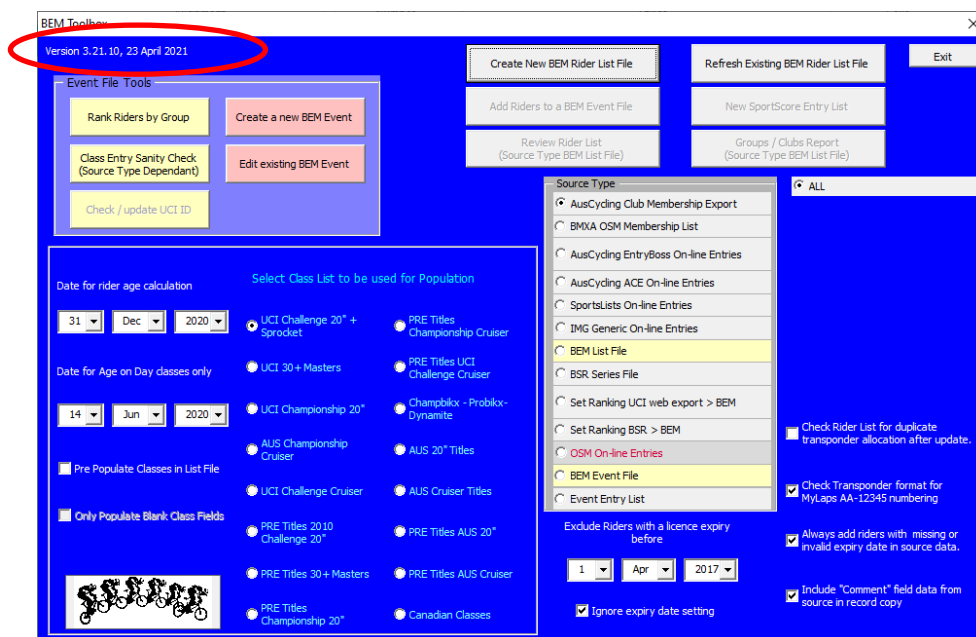


7. Notes:

- a. The installation is hardcoded into the folder structure:
C:\BEM\Programs\Toolbox
- b. The installation adds the Toolbox to the BMX Event Manager group in the Programs Menu and provides a shortcut on the Desktop



8. When prompted, select the language and appropriate Association and when the BEM Toolbox main menu is displayed, verify that the details are shown as **Version 3.21.10, 23 April 2021**.



Environment Details

The Toolbox3 program has the program files packaged with a third party compiler into a Microsoft Installer file. Note that Microsoft Excel is still required on the computer to be able to run the program.

Although the program is packaged into a MSI file, it is not compiled nor does it require an Activation Code.

The recommended PC environment is:

Operating system Windows XP, Vista, Windows7 or Windows 8 (full version, not the Tablet specific Windows 8 RT), Windows 10.

Office 2010 (recommended), Office 2003 or Office 2007.

The Toolbox 3.8.18 and above allows UCI Rankings to be updated in a BEM event file from an Excel UCI Rankings export from the UCI Website.

For users running Office 2007 and 2003, if not already installed you will need to install a Microsoft compatibility pack to be able to process the UCI Rankings Excel export file as the file format used by UCI contains features introduced in Office 2010. See <https://www.microsoft.com/en-US/download/details.aspx?id=3> for details.

Note that the BEM Toolbox is not compatible with Office 2013 and later (or more correctly), changes introduced by Microsoft in Office 2013 are not backwards compatible with thousands of projects that run quite happily on Office 2010, 2007 and 2003.

Critical to the reliable operation of the Toolbox program is to have all Microsoft Office updates, security patches and service packs installed. **If you do not have Excel versions at least matching the following, there is a good chance that your version of Excel is not up to date and may result in unpredictable operation.**

Version	Build	Comment
11.0	8404	Excel 2003, Service Pack 3+
12.0	6762	Excel 2007, Service Pack 3+
14.0	7266	Excel 2010 (32 or 64 bit Office installation)

End of Document