

## **B**MX **E**VENT **M**ANAGER© (BEM) Version 3.10.x

BEM and the companion programs RRD, SERIES and BEM TOOLBOX are easy to use programs for the management of entries, moto draws, race order setting, scoring, finals draws, real time result displays, team points and series scoring for BMX, MTB 4-Cross and Pump Track race meetings.

The BEM, RRD and Series programs have English, Spanish, French, German Italian and Portuguese language options.

Toolbox program in English and Spanish and BemTrain in English, Spanish and German.

Facilities for double timeline (bottom of Start Hill and Finish Line) transponder lap timing with interfaces for MyLaps, RaceResult and BeChronized transponder timing systems.

Results are auto set in BEM from the passing records including auto DNS and DNF detection.

The program supports BMX events run under UCI BMX 2019 Rules plus Scrambled Moto Rules for Cycling Associations including Australia, New Zealand, British Cycle Federation, Canada, Italy, South Africa, Germany, Finland, Denmark, Red Bull Pump Track Rules and stand-alone Time Trial competitions with optional finals based on Time Trial results.

For Mountain Bike 4-Cross events, the program supports UCI 4-Cross Regulations with the option to run a 4-Cross event BMX style with all riders participating in multiple scrambled moto qualifying heats to qualify into UCI 4-Cross style elimination stages.

The programs provide the flexibility to allow race meetings to be run the way **you** want to run them. The program can be configured for multiple languages.

An extensive range of reports is available to screen, printer, clipboard, HTML files, JSON files and progressive updating of live Web Results using the eZeventing web site or the SportsLists phone App.

Auto updating, self-scrolling, auto refresh HTML results file can be generated to provide on track near real time results display via a browser on a networked PC or on a laptop with dual monitor support.

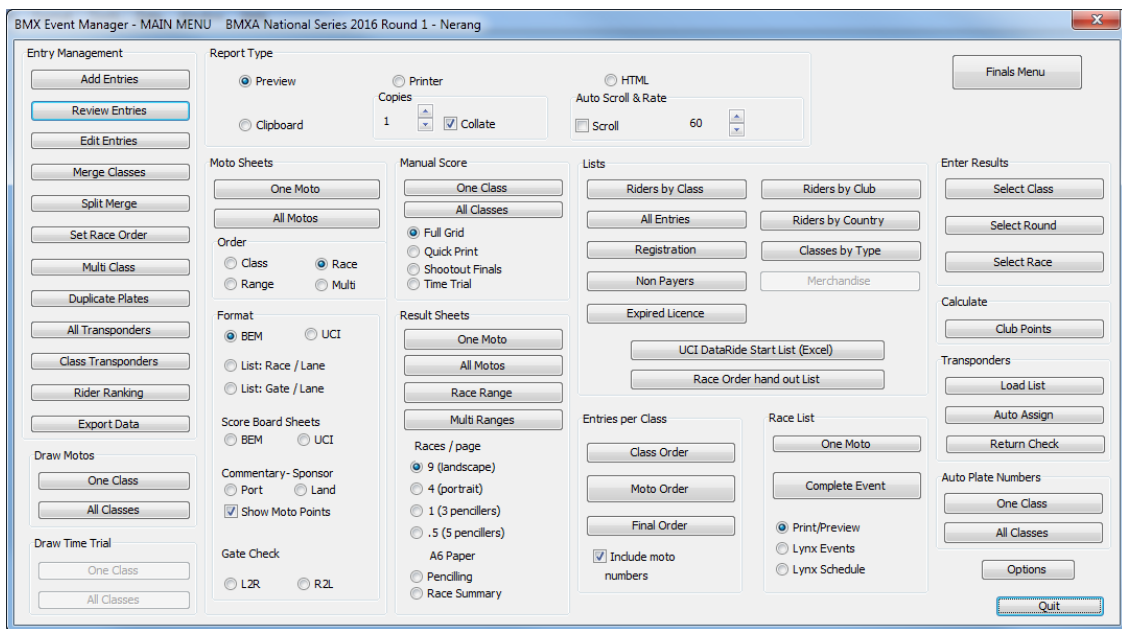
Data exchange with FinishLynx™ photo finish software to so results can be set in BEM directly from the Lynx system.

The companion BEM TOOLBOX is a utility program for managing rider lists, database updates and event creation and configuration.

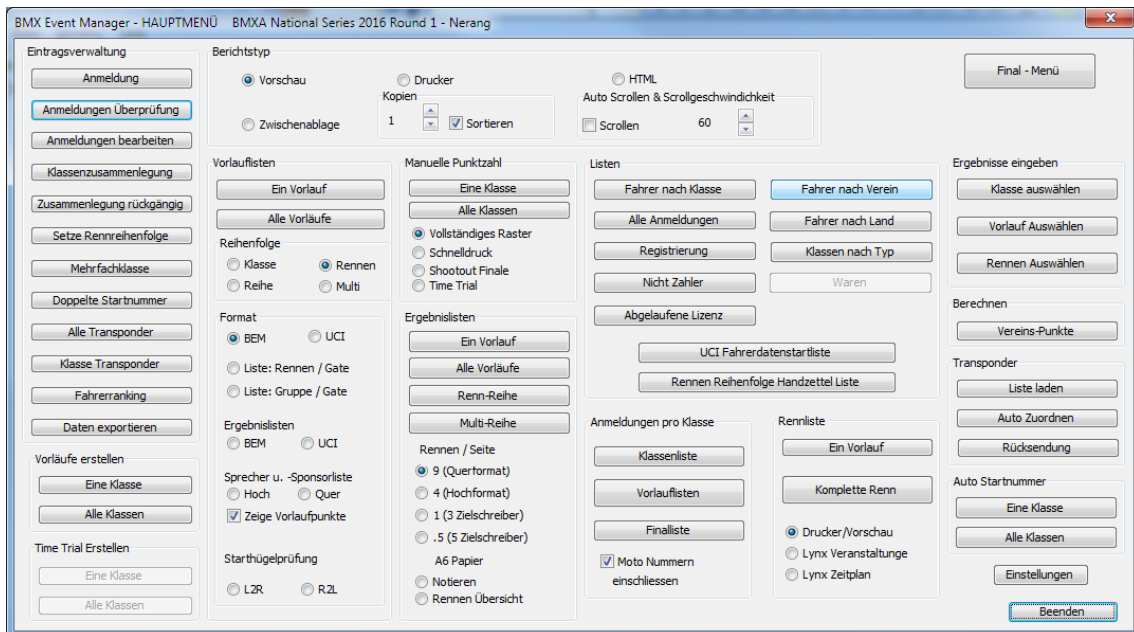
This document provides an overview of the specification and facilities. For additional information and operating instructions please refer to the individual program User Guides.

## Summary of Reports

| MOTO SHEETS                                                                                                                                                                                                                                                                                                                                                                                                                                                                                                                                                                                                                                                                                                                                                                                                                                                                                                                                                                                                                                                                                                                                                                                                                                                                                                                                                                                                                                                                                                                               | SCORING & RESULTS                                                                                                                                                                                                                                                                                                                                                                                                                                                                                                                                                                                                                                                                                                                                                                                                                                                                                                                                                                                                                                                                                                                                                                                                                                                                                                                                                                                                                                                                                                                                                                                                                                                                                              | EVENT MANAGEMENT                                                                                                                                                                                                                                                                                                                                                                                                                                                                                                                                                                                                                                                                                                                                                                                                                                                                                                                                                                                                                                                                                                                                                                                                                                                                                                                                                                                                                                                                                                                                                                                                                                                                                                                                                                                              |
|-------------------------------------------------------------------------------------------------------------------------------------------------------------------------------------------------------------------------------------------------------------------------------------------------------------------------------------------------------------------------------------------------------------------------------------------------------------------------------------------------------------------------------------------------------------------------------------------------------------------------------------------------------------------------------------------------------------------------------------------------------------------------------------------------------------------------------------------------------------------------------------------------------------------------------------------------------------------------------------------------------------------------------------------------------------------------------------------------------------------------------------------------------------------------------------------------------------------------------------------------------------------------------------------------------------------------------------------------------------------------------------------------------------------------------------------------------------------------------------------------------------------------------------------|----------------------------------------------------------------------------------------------------------------------------------------------------------------------------------------------------------------------------------------------------------------------------------------------------------------------------------------------------------------------------------------------------------------------------------------------------------------------------------------------------------------------------------------------------------------------------------------------------------------------------------------------------------------------------------------------------------------------------------------------------------------------------------------------------------------------------------------------------------------------------------------------------------------------------------------------------------------------------------------------------------------------------------------------------------------------------------------------------------------------------------------------------------------------------------------------------------------------------------------------------------------------------------------------------------------------------------------------------------------------------------------------------------------------------------------------------------------------------------------------------------------------------------------------------------------------------------------------------------------------------------------------------------------------------------------------------------------|---------------------------------------------------------------------------------------------------------------------------------------------------------------------------------------------------------------------------------------------------------------------------------------------------------------------------------------------------------------------------------------------------------------------------------------------------------------------------------------------------------------------------------------------------------------------------------------------------------------------------------------------------------------------------------------------------------------------------------------------------------------------------------------------------------------------------------------------------------------------------------------------------------------------------------------------------------------------------------------------------------------------------------------------------------------------------------------------------------------------------------------------------------------------------------------------------------------------------------------------------------------------------------------------------------------------------------------------------------------------------------------------------------------------------------------------------------------------------------------------------------------------------------------------------------------------------------------------------------------------------------------------------------------------------------------------------------------------------------------------------------------------------------------------------------------|
| <ul style="list-style-type: none"> <li>◆ Per class in box or table format</li> <li>◆ Each moto, run off, semi etc or range of events in race order.</li> <li>◆ One moto or final for one class.</li> <li>◆ Event Sponsor details printed as a heading on all reports.</li> <li>◆ Class Sponsor's details can be printed on moto sheets for commentary or posting.</li> <li>◆ Individual rider's sponsors listed on Commentary Format moto sheets.</li> <li>◆ Special paper saving format for UCI / BCF (non-rotation) motos.</li> <li>◆ Team Manager format showing moto draws and results for each stage collated by Club, State or Country.</li> <li>◆ User selectable formats from 9 down to 1 moto per page.</li> <li>◆ Score Board sheets for notice board posting which have both moto draws and results in several user selectable formats.</li> <li>◆ Four lane moto sheets for 4-Cross.</li> <li>◆ Individually named moto sheets for handout to all riders in one of three formats. This print out can be collated alphabetically, by Class or by Country / State / Club.</li> <li>◆ Moto draws, results and subsequent stage draws &amp; results with riders grouped for Team Managers (Club and/or State and/or Country)</li> <li>◆ Gate Check sheets in race order with lane numbering from left to right or right to left.</li> <li>◆ Pencilling sheets for finish line for both 3 (French) and 5 pencillers with event number and rider numbers for each moto.</li> <li>◆ JSON format Start Lists (RRD program)</li> </ul> | <ul style="list-style-type: none"> <li>◆ Result Recording Sheets (in race order). Standard (9 races per page) or Championship (4 races per page) or Pencilling Sheets for 3 pencillers or 5 pencillers (1 race per two pages).</li> <li>◆ Time trial recording.</li> <li>◆ A6 size pencilling and race result sheets.</li> <li>◆ Manual Score Sheets (where computer not available at track).</li> <li>◆ Spontaneous printed results as they are entered on the computer after each race and / or each class.</li> <li>◆ Progressive, auto updating near real time Web posted results with eZeventing web site or SportsLists phone App. (requires a subscription with the provider).</li> <li>◆ Set results directly from imported transponder passing records (AMB, Times-7, Tag Heuer / Chronolec)</li> <li>◆ Auto set DNS and DNF result where bottom of hill and finish transponder timelines are used.</li> <li>◆ Photo finish check request when transponder lap times are within an operator settable threshold.</li> <li>◆ Set results directly from imported Lynx photo finish records.</li> <li>◆ Moto point total.</li> <li>◆ Moto results.</li> <li>◆ Final results.</li> <li>◆ Finals placing's</li> <li>◆ Full results, motos run offs and finals.</li> <li>◆ Results for all riders sorted by Club.</li> <li>◆ Top 8 in each class.</li> <li>◆ Newspaper format results txt file.</li> <li>◆ Club (Team) points, calculation and report.</li> <li>◆ Series results for based on Classes for up to a ten event series.</li> <li>◆ Teams competition for 1 to 22 round series.</li> <li>◆ Generation of the UCI mandated format DataRide format Start List and Results Excel reports.</li> </ul> | <ul style="list-style-type: none"> <li>◆ Registration Report listing all riders with licence, payment and registration status.</li> <li>◆ Registration by scanning of bar coded licences.</li> <li>◆ List all riders in the event (sorted by name, race number or file reference).</li> <li>◆ List pay on day entries.</li> <li>◆ List riders and impacted classes where riders have entered more than one class.</li> <li>◆ List of any duplicate race numbers per class.</li> <li>◆ List riders whose licence has an expiry date (in an external database) before the event date.</li> <li>◆ List riders by class (sorted by name, race number, reference number or transponder).</li> <li>◆ List riders in Ranking Classes sorted by ranking.</li> <li>◆ List of classes with number of entries per class with classes listed in class, moto or finals order.</li> <li>◆ List riders by Club.</li> <li>◆ List riders by Country.</li> <li>◆ Race Order Analysis to optimise breaks for riders in more than one class.</li> <li>◆ Export one Class or all riders to MyLaps, RaceResult or BeChronized transponder timing systems.</li> <li>◆ Moto and Final Race Order handout sheets.</li> <li>◆ Export schedule and events to FinishLynx with Lynx.sch and Lynx.evt files.</li> <li>◆ On Track Points Café for direct rider and spectator access to scoring.</li> <li>◆ Post event list of riders who have not returned hired transponders.</li> <li>◆ Print registration confirmation slips with class and transponder details on A4, A6 plain paper or using a docket printer.</li> <li>◆ Team Manager reports collated by Club and/or State and/or Country for: <ul style="list-style-type: none"> <li>◆ Moto Draws</li> <li>◆ Moto Results</li> <li>◆ Stage draws and results.</li> </ul> </li> </ul> |



**Main Menu Dialogue (English)**



**Main Menu Dialogue - German**

## Event Management Facilities

| FACILITY                    | DETAILS                                                                                                                                                                                                                                                                                                                                                                                                                                                                                                                                                                                                                                                                                                                           |
|-----------------------------|-----------------------------------------------------------------------------------------------------------------------------------------------------------------------------------------------------------------------------------------------------------------------------------------------------------------------------------------------------------------------------------------------------------------------------------------------------------------------------------------------------------------------------------------------------------------------------------------------------------------------------------------------------------------------------------------------------------------------------------|
| Race Order.                 | <ul style="list-style-type: none"> <li>◆ Separate setting of Moto and Finals order by Class if required.</li> <li>◆ Setting of Final stage order by individual race.</li> <li>◆ Addresses the most tedious and time-consuming task in setting up an event, ie determining the Race Order. The race order can be set and changed with analysis provided from the perspective of riders entering multi classes to allow the best possible splits to be achieved quickly and easily.</li> <li>◆ Multi Class report lists riders who have entered more than one class.</li> <li>◆ Reports for one stage or complete event running order.</li> <li>◆ Special format Moto and Final Race order report for handout to riders.</li> </ul> |
| Duplicate Checking          | <ul style="list-style-type: none"> <li>◆ Automatic checking for duplicate entries.</li> <li>◆ Automatic checking for duplicate plates in class as entries is made.</li> <li>◆ Automatic checking for duplicate transponder numbers.</li> </ul>                                                                                                                                                                                                                                                                                                                                                                                                                                                                                    |
| Registration Report         | <ul style="list-style-type: none"> <li>◆ Report listing all riders in the event, their file reference, class, race number, date of birth, club, paid status, licence number, licence expiry date, payment and registration status.</li> <li>◆ Registration by entering of licence number or scanning licence number barcode displaying rider details for up to four classes on a screen visible to the rider for confirmation of class, race number, registration, payment status and licence expiry date.</li> </ul>                                                                                                                                                                                                             |
| Licence Expiry Checking.    | <ul style="list-style-type: none"> <li>◆ With an external reference file (typically derived from the National Organisation's Rider Database), a report is available detailing riders with expired or wrong classification licence on the event date.</li> </ul>                                                                                                                                                                                                                                                                                                                                                                                                                                                                   |
| Riders Age Calculation.     | <ul style="list-style-type: none"> <li>◆ The rider's age for the event is calculated from their date of birth.</li> <li>◆ Supports age on the day, year of birth, age at start and age at end of series.</li> </ul>                                                                                                                                                                                                                                                                                                                                                                                                                                                                                                               |
| Merchandise Orders          | <ul style="list-style-type: none"> <li>◆ Merchandise orders can be taken with the entries.</li> <li>◆ Reports on total orders, orders per rider, riders for individual product.</li> </ul>                                                                                                                                                                                                                                                                                                                                                                                                                                                                                                                                        |
| Auto Race Number Allocation | <ul style="list-style-type: none"> <li>◆ Auto allocation of race numbers is available for events where the organiser allocates and issues race plates</li> </ul>                                                                                                                                                                                                                                                                                                                                                                                                                                                                                                                                                                  |
| Transponder Allocation      | <ul style="list-style-type: none"> <li>◆ Import a list of scanned transponders to create an Allocation Pick List.</li> <li>◆ Manual and Auto Allocate transponders to riders from an Allocation List.</li> <li>◆ Label printing to assist transponder distribution</li> <li>◆ Report of non-returned transponders post event.</li> </ul>                                                                                                                                                                                                                                                                                                                                                                                          |
| File Reference.             | <ul style="list-style-type: none"> <li>◆ If file record numbers are assigned to entry forms, the numbers can be input with the entry details. BEM can then print a report of all riders or riders by class sorted by Reference Number for ease of entry auditing.</li> </ul>                                                                                                                                                                                                                                                                                                                                                                                                                                                      |
| Merging Classes.            | <ul style="list-style-type: none"> <li>◆ Merging of classes for minimum class size requirements is easily achieved by selecting classes from drop down lists.</li> <li>◆ Unmerge facility allows restoration of previously merged classes.</li> </ul>                                                                                                                                                                                                                                                                                                                                                                                                                                                                             |
| Export Data                 | <ul style="list-style-type: none"> <li>◆ Rider details and moto draws can be exported to a CSV or TAB delimited file for subsequent printing of labels, certificates or importing to other applications.</li> <li>◆ A tab delimited export in the correct format for importing to AMBit transponder timing software.</li> </ul>                                                                                                                                                                                                                                                                                                                                                                                                   |
| Barcode Scanning            | <ul style="list-style-type: none"> <li>◆ Where licence numbers are bar-coded, a scanner can be used to select riders for event entry, review of entries and for registration.</li> </ul>                                                                                                                                                                                                                                                                                                                                                                                                                                                                                                                                          |

**The RRD (Report and Result Display) companion program is designed primarily to be run on a PC networked with the PC running BEM or from a single PC with dual monitor support to provide the following facilities.**

| FACILITY                                                                                | DETAILS                                                                                                                                                                                                                                                                                                                                                                                                                                                                                                                                                                                                                                                                                                 |
|-----------------------------------------------------------------------------------------|---------------------------------------------------------------------------------------------------------------------------------------------------------------------------------------------------------------------------------------------------------------------------------------------------------------------------------------------------------------------------------------------------------------------------------------------------------------------------------------------------------------------------------------------------------------------------------------------------------------------------------------------------------------------------------------------------------|
| Screen Based Call-Up                                                                    | <ul style="list-style-type: none"> <li>◆ Saves on paper but does require a PC in the call up area.</li> <li>◆ Three races shown on screen at a time.</li> </ul>                                                                                                                                                                                                                                                                                                                                                                                                                                                                                                                                         |
| Reports to screen, printer, clipboard or HTML file.<br>Start Lists in JSON file format. | <ul style="list-style-type: none"> <li>◆ Reports and moto sheets can be printed independently from the main scoring computer.</li> <li>◆ Moto sheets individually named for handout to competitors.</li> <li>◆ Moto sheets and results for each stage of the event collated by Team Manager.</li> <li>◆ Results per Club.</li> </ul>                                                                                                                                                                                                                                                                                                                                                                    |
| On Track Points Café<br>(Requires Office 2003 or later)                                 | <ul style="list-style-type: none"> <li>◆ Provide riders and spectators direct access to stage draws, results, run schedule and notices via one or several networked PCs.</li> <li>◆ Administrator can enable / disable public printing or reports</li> </ul>                                                                                                                                                                                                                                                                                                                                                                                                                                            |
| Event Status Monitor                                                                    | <ul style="list-style-type: none"> <li>◆ Allows the event administrator to monitor heat draws and results entry.</li> <li>◆ Moto and scoring sheets can be printed without interrupting the results entry operator.</li> </ul>                                                                                                                                                                                                                                                                                                                                                                                                                                                                          |
| Auto Report Generator                                                                   | <ul style="list-style-type: none"> <li>◆ Allows the auto generation of selected HTML results (heat draws, entry lists, scoring etc.) on a per class basis for on demand web access.</li> <li>◆ Operator initiated or auto results printing on up to 4 separate printers.</li> <li>◆ Auto, progressive uploading of results during an event to the eZeventing web site or to the SportsLists phone App.</li> </ul> <p>Note that to use these facilities, a subscription with the respective provider is required.</p> <p>For eZeventing see: <a href="http://www.ezeventing.com.au">www.ezeventing.com.au</a></p> <p>For SportsLists see: <a href="http://www.sportslists.eu">www.sportslists.eu</a></p> |

**The SERIES program compiles results from up to 22 event (.bem) files and generates series points reports for both Class based and Team competitions.**

| FACILITY                    | DETAILS                                                                                                                                                                                                                                                                                                                                                                                                                                                                                                                                                                                                                                                                                                                                                                                                                                                                                                                                                                                                                                                                          |
|-----------------------------|----------------------------------------------------------------------------------------------------------------------------------------------------------------------------------------------------------------------------------------------------------------------------------------------------------------------------------------------------------------------------------------------------------------------------------------------------------------------------------------------------------------------------------------------------------------------------------------------------------------------------------------------------------------------------------------------------------------------------------------------------------------------------------------------------------------------------------------------------------------------------------------------------------------------------------------------------------------------------------------------------------------------------------------------------------------------------------|
| Number of individual rounds | From 1 to 22                                                                                                                                                                                                                                                                                                                                                                                                                                                                                                                                                                                                                                                                                                                                                                                                                                                                                                                                                                                                                                                                     |
| Series Qualification.       | <ul style="list-style-type: none"> <li>◆ The user can specify the minimum number of rounds to compete in to qualify for the series award.</li> <li>◆ Individual rounds can be flagged as mandatory or optional to qualify for a series award.</li> <li>◆ Up to four groupings of rounds can be specified to specify series qualification. E.g. Must compete in 3 of rounds 1, 2, 6, 7, 9.</li> </ul>                                                                                                                                                                                                                                                                                                                                                                                                                                                                                                                                                                                                                                                                             |
| Points Schemes              | <ul style="list-style-type: none"> <li>◆ The user can enter their own point's scheme with up to four translation tables available for any one series plus a table for overall place in the class and / or Time Trial from 1 to 100. This allows separate tables to be used for moto, final and bonus points.</li> <li>◆ Each class or team can select from one of six sets of four tables.</li> <li>◆ Provides points to be taken from best scores from nominated rounds. Up to four "best of" groups can be defined. E.g. Count the best 4 results from rounds 1 – 6 and the best 3 results from rounds 7, 9 and 11.</li> <li>◆ Each Class or Team has it's own multiplier applied to all rounds.</li> <li>◆ Each round has it's own multiplier allowing for example double or triple points for selected round.</li> <li>◆ Riders in merged classes are scored in their "home" class for the series.</li> <li>◆ Configurable for UCI Ranking Series.</li> <li>◆ Configurable for Canadian Provincial Points rules.</li> <li>◆ Configurable for European Cup Series.</li> </ul> |
| Bonus Points                | <p>Bonus points can be awarded for:</p> <ul style="list-style-type: none"> <li>◆ Entering a round</li> <li>◆ Competing in a round</li> <li>◆ Entering all rounds of the series</li> <li>◆ Competing in all rounds of the series</li> <li>◆ Competing in each moto</li> <li>◆ Earliest qualifying round per class (for UCI Team Scoring System)</li> <li>◆ Qualifying for sixteenth, eighth, quarter or semi finals</li> <li>◆ Based on the number of riders in the class</li> </ul>                                                                                                                                                                                                                                                                                                                                                                                                                                                                                                                                                                                              |
| Tie Break                   | <ul style="list-style-type: none"> <li>◆ One of four options can be selected by the operator to resolve riders tied on points at the end of the series. <ul style="list-style-type: none"> <li>◆ No tie break applied, equal points get equal ranking.</li> <li>◆ Tie break based on best placing(s) in the finals from the series.</li> <li>◆ Count back on series points from last to first round.</li> <li>◆ Count back on series points from highest to lowest applicable rounds.</li> </ul> </li> </ul>                                                                                                                                                                                                                                                                                                                                                                                                                                                                                                                                                                     |
| Team Scoring                | <ul style="list-style-type: none"> <li>◆ Teams can comprise any number of riders.</li> <li>◆ For each round, the user specifies the number of individual rider results counting towards the teams round total, Eg Each team could consist of 8 riders with the best 4 individual scores counting towards the team total.</li> <li>◆ An individual rider can be a member of a maximum of four teams in the same event, eg Club, State and Corporate.</li> <li>◆ Configurable for UCI Team Rules.</li> </ul>                                                                                                                                                                                                                                                                                                                                                                                                                                                                                                                                                                       |
| Reports                     | <p>Summary and Detailed result reports for:</p> <ul style="list-style-type: none"> <li>◆ One or all Teams</li> <li>◆ One or all Classes</li> <li>◆ Reports are available to printer, screen, clipboard, HTML file or export in CSV or TAB delimited format.</li> </ul>                                                                                                                                                                                                                                                                                                                                                                                                                                                                                                                                                                                                                                                                                                                                                                                                           |

## Some events run with BEM

- ◆ Victorian Grand Prix Series from 1998.
- ◆ South Eastern Cash Dash from 1998.
- ◆ BMXV Interclub and State Championships from 1998.
- ◆ Lilydale Supernational 1999.
- ◆ Bendigo Gold Rush 2000.
- ◆ Majority of events at Happy Valley from January 2000.
- ◆ Majority of Victorian Metro Plate rounds since 1998.
- ◆ Shoot-Out Competition at the Darwin, Adelaide and Hobart (2002) Australian Titles.
- ◆ Canadian National BMX Championships 2005 –
- ◆ . Vic Track Attack Series from 2001.
- ◆ SA State Titles 2001, 2005-.  
(transponder event from 2011)
- ◆ NZ pre-Titles 2002.
- ◆ British National Series from 2002-.
- ◆ UCI Oceania Ranking Series 2003-2019.
- ◆ Pacific Oceania (Perth) 2003.
- ◆ Western Australia State Titles from 2003.
- ◆ Nerang Gold Coast Supernational 2004.
- ◆ New Zealand National Championship 2004-
- ◆ Alberta Provincial Championship 2004 -.
- ◆ BMX Australia Champbikx, Probikx and Oceania Ranking Series from 2004
- ◆ World Pre-Titles 2003 Perth (AUS), 2007 Abbotsford (CAN) and 2009 Adelaide (AUS)
- ◆ Australian Championships 2003, 2006-2019. (transponder scored from 2010)
- ◆ Queensland State Championships 2009- (transponder scored events)
- ◆ BMX Germany National Series from 2015
- ◆ Variety of South American UCI C1 events

## System Requirements

**Operating System:** Windows XP / Vista / Windows7 and with Windows 8 / 8.1 and Windows 10, the full version, not the tablet RT version.

OK for either 32 or 64 bit versions of Windows.

Professional version of Windows recommended where transponder timing is used.

**Microsoft Office:** Office 2003, 2007 or 2010.

BEM 3.10.x does not run on Office 2013, 2016 or Office 365 as Microsoft have not maintained full backwards compatibility with Office 2010, 2007 and 2003 versions.

**Hardware:**

Recommended minimum PC configuration is an i3 processor with 4gb of RWM.

While the program will run on a lesser configuration, some patience may be required.

Where Transponder timing is to be used, a much higher processing load is required and therefore the fastest available PC is recommended such as a 2G Core2 Duo or i5 / i7.

## Price

The Programs are available to Clubs and Organisations for evaluation and trial usage. Registration fees for regular users are:

| BEM, RRD, Series and Toolbox Programs                 | Version 3.9.x |
|-------------------------------------------------------|---------------|
| Non-profit groups (per Club), single licence          | AUD \$150.00  |
| Non-profit groups,(per Club) multiple single licences | AUD \$100.00  |
| Cycling Associations and Commercial Users             | AUD \$1050.00 |

| BemTrain                                                 | Version 3.0.x |
|----------------------------------------------------------|---------------|
| Non-profit groups (per Club), single licence             | AUD \$195.00  |
| Cycling Federations and Commercial Users, single licence | AUD \$390.00  |

Registration entitles users to unlimited support and all maintenance updates.

The program was developed and is supported by Lyndon Downing.

Phone or WhatsApp +61 418 363 231

E-mail [Lyndon.Downing@bigpond.com](mailto:Lyndon.Downing@bigpond.com)

Skype: Lyndon.Downing

Enter Results: BMXA National Series 2014 Round 1 - Nerang

Event F12

Class Probikx Men Elite Moto Final Gate Final

Exit

Accept without check

Accept

| NAME               | PLATE | PLACE | POINTS | LAP TIME | TOTAL POINTS | SPLIT TIME |
|--------------------|-------|-------|--------|----------|--------------|------------|
| Anthony DEAN       | 144   | 1st   | 1      | 30.109   | 5            | 2.503      |
| Bodi TURNER        | 747   | 2nd   | 2      | 30.855   | 5            | 2.483      |
| Matthew JUSTER     | 661   | 3rd   | 3      | 30.876   | 3            | 2.521      |
| Barry NOBLES       | 95    | 4th   | 4      | 31.137   | 7            | 2.573      |
| Corey FRIESWYK     | 551   | 5th   | 5      | 31.310   | 4            | 2.522      |
| Joshua CALLAN      | W6    | 6th   | 6      | 31.474   | 3            | 2.591      |
| Luke MADILL        | 17    | 7th   | 7      | 31.556   | 6            | 2.572      |
| Matthew WILLOUGHBY | 190   | 8th   | 8      | 31.632   | 12           | 2.744      |

Race Comment  
19:01:03

Transponder and Camera Control

Single Import Import Now Settings Review Passing Lap Time

Auto Accept  
 Auto DNS DNF  
 Auto Import

Select Auto Import Transponder Passings Files

Passings File 1 C:\BEM\Passings\Nerang 2014\HILL\_LOG.txt

Passings File 2 C:\BEM\Passings\Nerang 2014\Finish\_LOG.txt

Auto Print Report Selection

0 Results, Each Race 0 Results, Each Class 1 Run Off 0 Class, Next Stage

Next on Accept  
 Anticipate DNS  
 Set Place by Time  
 Stopwatch Pop up  
 Auto Read Back  
 Auto Process Stage  
 15 min Finish to Score Check  
 Write Lynx LIF on Accept  
Do not select Write Lynx if you don't know what this option does!

Riders Sorted by

Plate  
 Moto Points  
 Name

Read Back

Clear

Race

Next

Previous

Class

Race

## BEM Results Entry Screen

Entries: TEST 2019 Pro Spectacula - T46

Select Rider from List

BMXA OSM National BEM Rider List.xls

Transfer Rider >

Add All

Registration Updates:

ABBATE, Alexander

ABBEY, William

ABBIE, Jaxson

ABBIE, Oliver

ABBLITT, Nicholas

ABBOTT, Bay

ABBOTT, Casey

ABBOTT, Hugo

ABBOTT, Ivo

ABBOTT, Kaylan

ABBOTT, Khloe

ABBOTT, Samuel

ABBOTT, Sharon

ABBOTT-FALLO, Slater

ABDILLA, Matthew

ABDULLAH, Jordee

ABDULLAH, Muhammad asyraf

ABDY, Adam

ABDY, Faith

ABDY, Kris

ABDY, Reece

ABDY, Riley

A'BECKETT, Brad

A'BECKETT, Jaxon

A'BECKETT, Rydan

ABEL, Brendan

ABEL, Caleb

ABEL, Jack

ABEL, Kyron

ABELA, Callee

ABELA, Charlee

ABELA, Jax

ABELA, Lana

ABELA-PIGOTT, Tenae

ABELL, Cassie

ABI MERRI, Anthony

ABI-RACHED, Gabriel

ABRACHED, Jude

Rider List File

< Update Details Select File

Registration

Display Details

Total Riders = 29

Total Entries = 29

Exit

Change to

Review Entries Merchandise

Licence

Find Licence UCI Code

Form Ref Number Type Expiry date UCI ID

Registered

Gender

Male

Female

Entry Paid

Yes

No

Payment Type

50.00 N

Accept Entry

OK

Keep Rider

Delete Entry

Clear

Select Class

PS Superclass Men

Age at Event

Ranking

None

Team Numbers

Set Team1\_No to Club\_No

Set Team2\_No to State\_No

Set Team3\_No to Nat\_No

Set Team4\_No to Sponsor\_No

1 2

3 4

Transponder Details

Label Number

Club

Club Unknown

Sponsor

Club

Comment

Emergency Contact: Name and Phone

Rider Contact: Email and Phone

## BEM Rider Entry Screen



| 4 Cruiser Senioren II, Moto 1 Gate 1 |     |                    |     |
|--------------------------------------|-----|--------------------|-----|
| L1                                   | 5   | Christoph KANIA    | NRW |
| L2                                   | 816 | Marco EISENSCHMIDT | NDS |
| L3                                   | 3   | Thomas DUCKHORN    | BRE |
| L4                                   | -   | -                  | -   |
| L5                                   | -   | -                  | -   |
| L6                                   | -   | -                  | -   |
| L7                                   | 712 | Christian REUPKE   | NDS |
| L8                                   | 358 | Arno NEUMANN       | BRE |

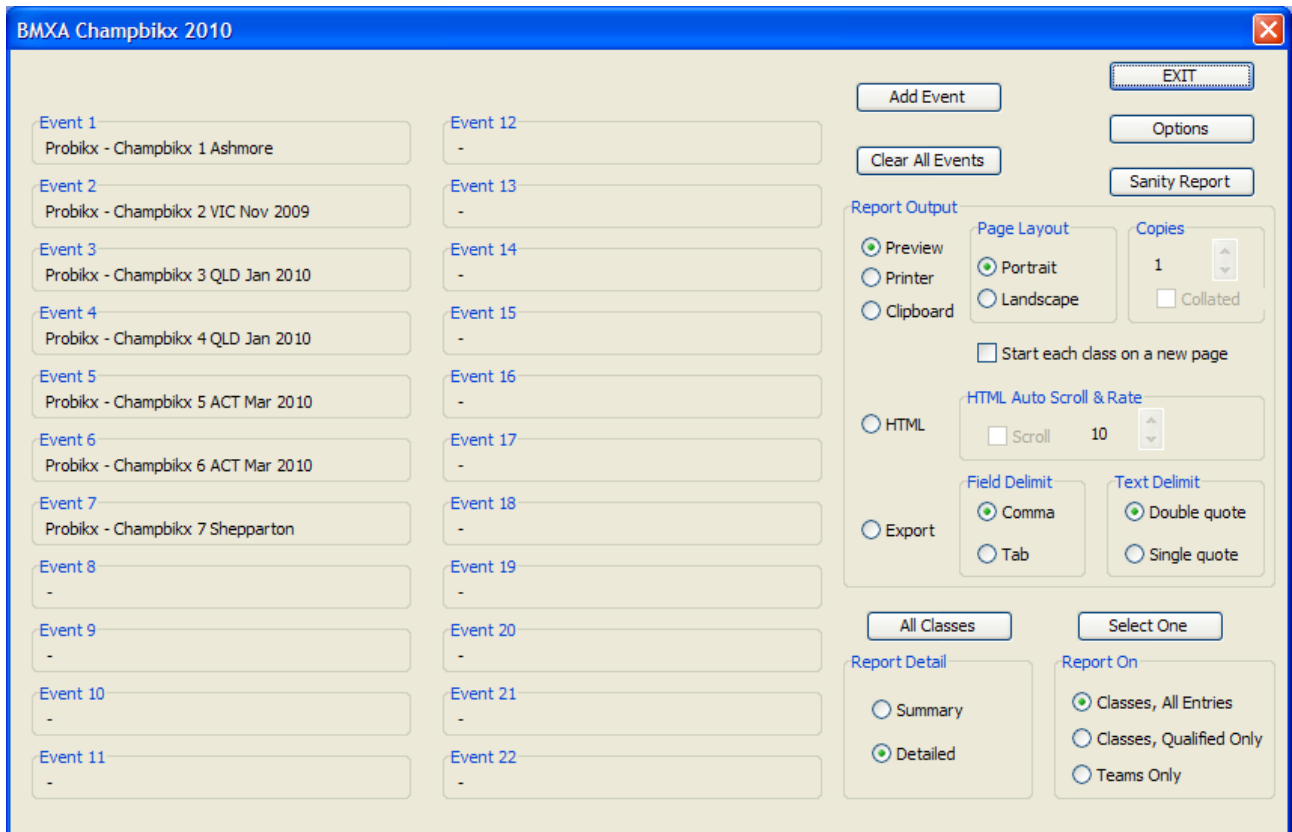
  

| 5 Cruiser Senioren III, Moto 1 Gate 1 |    |                 |     |
|---------------------------------------|----|-----------------|-----|
| L1                                    | 6  | Andreas ENDLEIN | BAY |
| L2                                    | 2  | Joachim LIENERT | NDS |
| L3                                    | 44 | Udo WAGNER      | WÜT |
| L4                                    | -  | -               | -   |
| L5                                    | -  | -               | -   |
| L6                                    | 4  | Michael PETER   | BRA |
| L7                                    | 11 | Mario GRÖNING   | NDS |
| L8                                    | 02 | Uwe SKRZYPEK    | BAD |

| 6 Cruiser Senioren III, Moto 1 Gate 2 |     |                 |     |
|---------------------------------------|-----|-----------------|-----|
| L1                                    | 1   | Thomas KUROWSKI | HAM |
| L2                                    | -   | -               | -   |
| L3                                    | 348 | Holger GODAU    | HES |
| L4                                    | 8   | Thomas ELSNER   | BAY |
| L5                                    | -   | -               | -   |
| L6                                    | 12  | Carsten JOOS    | WÜT |
| L7                                    | -   | -               | -   |
| L8                                    | 06  | Markus WEIBE    | HES |

## RRD Screen Based Call Up



## SERIES Event Selection and Report Screen

## Rules supported for Moto Rotation (scrambled moto) Rules.

| FEATURE                                                                    | <b>BMXA, BMXNZ, BMX South Africa &amp; BCF Rules</b><br>(complies with 2019 Australian, South Africa, New Zealand and British National Rules)                                                                                                                                                                  | <b>CANADIAN CYCLING BMX</b><br>(complies with 2015 CCA rule update)                                                                                       | <b>Castle Hill Orange Blossom Rules</b>                                                                                                                                   | <b>Shoot Out Rules</b><br>Adelaide 2001 National Shoot Out.<br>plus<br>Four Gate Eliminator Competition                                                                      | <b>4-Cross Hybrid Rules</b><br>Scrambled Motos<br>Qualifying to UCI<br>4-Cross Eliminations   |
|----------------------------------------------------------------------------|----------------------------------------------------------------------------------------------------------------------------------------------------------------------------------------------------------------------------------------------------------------------------------------------------------------|-----------------------------------------------------------------------------------------------------------------------------------------------------------|---------------------------------------------------------------------------------------------------------------------------------------------------------------------------|------------------------------------------------------------------------------------------------------------------------------------------------------------------------------|-----------------------------------------------------------------------------------------------|
| Number of starting lanes on gate.                                          | Up to 8 (yes you can specify 2, 4 or 6 lanes).<br>Four lanes for Mountain Bike 4-Cross racing.                                                                                                                                                                                                                 | 8 only (for rule compliance).                                                                                                                             | 8 only (for rule compliance).                                                                                                                                             | 8 only (for rule compliance).                                                                                                                                                | 4 only                                                                                        |
| Number of classes.                                                         | Up to 100 per event                                                                                                                                                                                                                                                                                            |                                                                                                                                                           |                                                                                                                                                                           |                                                                                                                                                                              |                                                                                               |
| Pre-final motos.                                                           | Up to 7                                                                                                                                                                                                                                                                                                        | Up to 7.                                                                                                                                                  | Up to 7 (normally 3).                                                                                                                                                     | 2 qualifying rounds.                                                                                                                                                         | Up to 7 (typically 3)                                                                         |
| Riders per class.                                                          | Unlimited                                                                                                                                                                                                                                                                                                      | Maximum of 320 per class                                                                                                                                  | 4 to unlimited.                                                                                                                                                           | 5 to 64 riders per class.                                                                                                                                                    | Unlimited                                                                                     |
| Class types.                                                               | Sprocket and Open.                                                                                                                                                                                                                                                                                             | Amateur and Pro transfer rules.                                                                                                                           | Age and Pro.                                                                                                                                                              | Open.                                                                                                                                                                        | Open                                                                                          |
| Moto Selection and Type.                                                   | Random & pre-emptive selection, mixed rotation motos pre final.                                                                                                                                                                                                                                                | Random & pre-emptive selection, mixed rotation motos pre final.                                                                                           | Random & pre-emptive selection, mixed rotation motos pre final.                                                                                                           | Shootout: Random selection for qualifying rounds.<br>Four Gate Eliminator: Selection based on Ranking.                                                                       | Random & pre-emptive selection, mixed rotation motos.                                         |
| Scoring.<br><br>Note that results can be entered by place or by lap times. | <ul style="list-style-type: none"> <li>◆ UCI (Normal requirement)</li> <li>◆ Legacy scoring schedules for BMXA and BMXNZ</li> <li>◆ Mountain Bike 4 lane.</li> </ul>                                                                                                                                           | UCI                                                                                                                                                       | BMXA.                                                                                                                                                                     | BMXA.                                                                                                                                                                        | UCI                                                                                           |
| Scoring Club & Series Points.                                              | Points total per Club and per Rider calculated (10 for 1st, 8 for 2 <sup>nd</sup> ,.... 1 for 8th) independently from points system and rules selected for the event.                                                                                                                                          | Supports Canada Cup and District points schemes for Novice, Intermediate, Expert, Junior, Pro and Cruiser Classes.<br>Supports Canada Cup Team rules.     |                                                                                                                                                                           |                                                                                                                                                                              | Series and / or Team Competition with the BEM Series program.                                 |
| Final determined by:                                                       | Eighth, Quarter and semi-finals as required. Supports both: <ul style="list-style-type: none"> <li>◆ Deadman (BMXA rule E.1.i).</li> <li>◆ Points through (rule E.1.ii).</li> <li>◆ Final or extra moto (E.4)</li> </ul>                                                                                       | Eighth, Quarter and semi-finals per CCA Rules.<br>Last Chance race for last two places in final for PRO class with 10-12 riders.                          | Quarter and semifinals per Orange Blossom transfer rules.                                                                                                                 | Transfer from qualifying rounds.<br>Random selection of qualifiers for one on one races.                                                                                     | UCI 4-Cross Elimination Stages.<br>I.e. Round of 64, 32, 16, 8 dependant on number per class. |
| Number of finals.                                                          | The following finals options are supported <ul style="list-style-type: none"> <li>◆ Expert (top 8).</li> <li>◆ Expert (top 8) + Consolation (9-16).</li> <li>◆ Expert (top 8) + invitation (9 – xx).</li> <li>◆ One gate (top 8 after motos, no semi or quarter).</li> <li>◆ No finals, motos only.</li> </ul> | Single final only per CCA rules.<br><br>(Expert + Consolation and Expert + Invitation are available in the program but do not comply with 2004 CCA rules) | Age Classes: One on one Expert Final and Consolation<br><br>Pro Classes: One on one Expert Final and Consolation to determine 3 <sup>rd</sup> to 8 <sup>th</sup> placing. | 1/8, quarter and semi finals determined by class numbers.<br><br>Main and Consolation final.<br><br>Supports both manual draws and random computer selection for the Finals. | A & B Finals dependant on number per class.<br>Optional extra moto for small classes.         |

## Rules Supported for Non Rotated Motos

| <b>FEATURE</b>                                                             | <b>UCI</b><br>UCI BMX Rule Book<br><b>Version in force January 1st, 2019</b>                                                                                                                                               | <b>British Cycle Federation</b><br><b>non moto rotation Rules</b><br>(Rider Allocation Sheet 2002)                                                  | <b>UCI 4-CROSS</b><br>UCI Mountain Bike Regulations<br>Edition 01-01-2018                            |
|----------------------------------------------------------------------------|----------------------------------------------------------------------------------------------------------------------------------------------------------------------------------------------------------------------------|-----------------------------------------------------------------------------------------------------------------------------------------------------|------------------------------------------------------------------------------------------------------|
| Number of starting lanes on gate.                                          | 8 only (for UCI compliance).                                                                                                                                                                                               | 8 only (for rule compliance).                                                                                                                       | 4 only (for rule compliance).                                                                        |
| Number of classes                                                          | Up to 100 per event.                                                                                                                                                                                                       |                                                                                                                                                     |                                                                                                      |
| Pre-final motos.                                                           | Normally 3 for UCI conformance                                                                                                                                                                                             | Normally 3 for BCF conformance.                                                                                                                     | One timed qualifying run per rule 4.4.004.                                                           |
| Riders per class.                                                          | Up to 320 per class.                                                                                                                                                                                                       | Up to 71 per class (under review).                                                                                                                  |                                                                                                      |
| Class types.                                                               | UCI                                                                                                                                                                                                                        | BCF.                                                                                                                                                | Cut off at 16 or 64 riders from qualifying run.                                                      |
| Moto Selection and Type.                                                   | <ul style="list-style-type: none"> <li>◆ Ranking (6.1.027 a.)</li> <li>◆ Time Trial (6.1.027 b.)</li> <li>◆ Random (6.1.027 c.)</li> <li>◆ Scrambled (6.1.027 d.)</li> <li>◆ UCI 2018 SuperCross (Annex 1 BIS).</li> </ul> | Random selection.                                                                                                                                   | Riders seeded to elimination heats based on qualifying times per rule 4.4.006.                       |
| Scoring.<br><br>Note that results can be entered by place or by lap times. | UCI.                                                                                                                                                                                                                       | UCI.                                                                                                                                                | UCI                                                                                                  |
| Scoring Club & Series Points.                                              | Series Program can be configured for ranking points for up to a 22 event series and Team points per UCI scheme.                                                                                                            | Series scoring with Series Program (supports BCF National Series Points).                                                                           | Series and / or Team Competition with the BEM Series program.                                        |
| Final determined by:                                                       | 1/16, 1/8, ¼ and 1/2 as required.<br>◆ UCI 2018 Transfer Systems.                                                                                                                                                          | 1/8, quarter and semifinals per BCF Rider Allocation Chart.                                                                                         | Transfer system per rule 4.4.006 with the first and second placed riders qualify for the next round. |
| Number of finals.                                                          | Single final per Series Rules<br><br>Time Trial Super-Final for events with Time Trials.                                                                                                                                   | A and B finals (subject to class numbers) per BCF National Series Rules.<br>A plus Invitation finals (subject to class numbers) for Formula Racing. | Main and Small finals per rule 4.4.008.                                                              |

## Additional Event Support

| FEATURE                                                                    | Time Trial                                                                                                                                                                                                                                                                                                                                                                                                                                   | BSX<br>(Backyard Super Cross)                                                                                                         | Red Bull Pump Track<br>Solo run and Head to head dual.                                                   |
|----------------------------------------------------------------------------|----------------------------------------------------------------------------------------------------------------------------------------------------------------------------------------------------------------------------------------------------------------------------------------------------------------------------------------------------------------------------------------------------------------------------------------------|---------------------------------------------------------------------------------------------------------------------------------------|----------------------------------------------------------------------------------------------------------|
| Number of starting lanes on gate.                                          | From 2 to 8.                                                                                                                                                                                                                                                                                                                                                                                                                                 | 2 only (for rule compliance).                                                                                                         | 1 or 2                                                                                                   |
| Number of classes                                                          | Up to 100                                                                                                                                                                                                                                                                                                                                                                                                                                    |                                                                                                                                       |                                                                                                          |
| Pre-final motos.                                                           | None                                                                                                                                                                                                                                                                                                                                                                                                                                         | None.                                                                                                                                 | None                                                                                                     |
| Riders per class.                                                          | Up to 200 per class.                                                                                                                                                                                                                                                                                                                                                                                                                         | Unlimited                                                                                                                             | Maximum of 110 per Red Bull Rules                                                                        |
| Class types.                                                               | User Defined                                                                                                                                                                                                                                                                                                                                                                                                                                 | User Defined                                                                                                                          | User Defined                                                                                             |
| Moto Selection and Type.                                                   | <ul style="list-style-type: none"> <li>◆ Random.</li> <li>◆ Ranking or Time Trial as per UCI BMX Rules 6.1.077.</li> <li>◆ UCI SuperCross</li> </ul>                                                                                                                                                                                                                                                                                         | Random selection.                                                                                                                     |                                                                                                          |
| Scoring.<br><br>Note that results can be entered by place or by lap times. | UCI.                                                                                                                                                                                                                                                                                                                                                                                                                                         | UCI.                                                                                                                                  |                                                                                                          |
| Final determined by:                                                       | Time Trial                                                                                                                                                                                                                                                                                                                                                                                                                                   | Time Trial for Seeding and Elimination<br><br>1/8, 1/4, 1/2 Finals dependant on class numbers.                                        | Time Trial for knock out heat seeding and cut-off<br><br>1/8, 1/4, 1/2 Finals dependant on class numbers |
| Number of finals.                                                          | User configurable for: <ul style="list-style-type: none"> <li>◆ Single or two run Time Trial</li> <li>◆ Single run Time Trial + SuperFinal</li> <li>◆ Single or two run Time Trial + final for top 8.</li> </ul> Single or two run Time Trial + Finals for all entrants. I.e.<br>A final for fastest 8 from TT.<br>B final for 9 <sup>th</sup> – 16 <sup>th</sup> from TT<br>C final for 17 <sup>th</sup> – 24 <sup>th</sup> from TT<br>etc. | A and B finals (subject to class numbers).<br><br>Refer to <a href="http://www.bmxultra.com">www.bmxultra.com</a> for full BSX rules. | Small Final for 3 <sup>rd</sup> and 4 <sup>th</sup><br>Big Final for 1 <sup>st</sup> and 2 <sup>nd</sup> |