

Release and Installation Notes

BemTrain Version 3.3.0



Release Overview.

BemTrain update to 3.3.0 delivers new features across the standard and premium versions as well as a number of bug fixes.

As the versions post 3.2.5 have had limited distribution, this release note covers all changes from 3.2.5 to 3.3.0.

Please refer to the change list for full details of this release.

For all enquiries regarding BemTrain, please contact Lyndon Downing.

Email: lyndon@moto-sheets.com



Changes from 3.2.5 to 3.3.0

- Added new run modes for:
 - Gate or photocell start with ID loop after the start.
 - Gate or photocell start, photocell finish, no rider ID loop.
- Added new Minimum Format for passing files to contain Transponder, Location, Date and Passing Time only with the intention to improve scoreboard reaction time by reducing the amount of data being handled. Note that this format is to be used only when the transponder to competitor association is made with a .bem event file.
- Update to allow the same 00-09991, 00-09992 or 00-09993 Start Gate transponder format to be specified in BemTrain when running the MyLaps Smart Decoder as is used with the traditional Desktop (red) and Track Side Box ProChip Decoders.
- Add a new feature to allow for multiple intermediate point (split) times during a lap for Multi Lap 3 + 5 scoreboard.
- Added a new feature to allow a single intermediate point (split) time for Time Trial Cumulative times and Time Trial Best time.
- Added new interface for on-site Video Wall scoreboard (Premium version).
- Added a new export of scoreboard results in an Orbits compatible results format that can be used for direct import into BEM (Premium version).

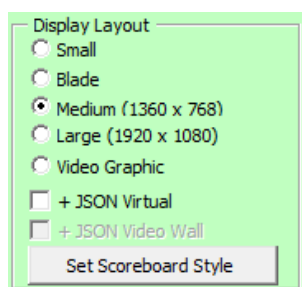


Changes from 3.2.3.2 to 3.2.5

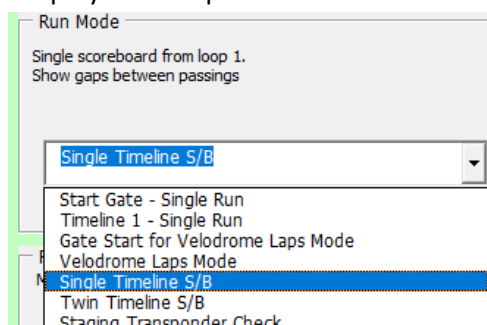
- Revised format of the Staging Check Scoreboard to include Plate and Category fields.

	NAME	CATEGORY	T/PONDER
5	Mercedes SCOTT	Women	TL-36043 10:58:20
7	Zoe NOONAN	Women	NW-52132 10:57:19
4	Johanna JEPHCOTT	Women	RP-01181 10:56:32
2	Annaliese ROKOV	Women	RH-34444 10:55:44
22	Riley BRAS	Men	HR-70039 10:54:55
1	Saya SAKAKIBARA	Women	GN-61321 10:53:50
3	Cassie VOYSEY	Women	PC-66534 10:53:03
21	Alistair SCOTT	Men	FK-25220 10:48:56

- Addition of new scoreboard size optimised for Blade PCs.



- Addition of Json virtual scoreboard output that generates a Json virtual scoreboard output for each scoreboard change with the initial use in conjunction with the advanced BEMGrfix scoreboard developed by moto-sheets.com
- Addition of a Speed Trap function to send calculated speed between two photo-beams to the Json virtual scoreboard.
- Preparation for a future feature to send scoreboard data in Json format to a Video Wall display.
- Added a specific Run Mode for Single Timeline Scoreboard (showing gaps between riders) to simplify the setup of that scoreboard mode.



Installing BemTrain 3.3.0

Prerequisites

Please check that your PC meets the requirements listed in the Operating System and Microsoft Office sections before installing BemTrain and that you have an Upgrade Code for this version.

Note that BemTrain version 3.0.x and later will not run Session files created with versions 2.2.x. and earlier.

If you require access to training data from an earlier Session file after installing the later BemTrain, please email the session file(s) to lyndon.downing@bigpond.com for conversion to the later format.

User and Upgrade Codes

For updates and new installations, an upgraded code is required to complete the installation.

For first time installations, a User Code is required in addition to the upgrade code.

If you do not have you User Code or Upgrade Code, please contact lyndon.downing@bigpond.com

Removal of Earlier Version(s)

All previous versions of BemTrain MUST be uninstalled before installing this update.

Click Start, Control Panel, Programs and Features (Add and Remove Programs in Windows XP)

[Uninstall or change a program](#)

To uninstall a program, select it from the list and then click Uninstall, Change or Repair.

Organise ▾ Uninstall Change Repair				
Name	Publisher	Installed On	Size	Version
 BemTrain	Bemman	13/08/2020	3.35 MB	3.2.2.3

In the Programs and Features window, Right click on BemTrain then Left click on Uninstall. Answer Yes to any prompt required to complete the removal of the earlier version.



Install BemTrain

From the <https://www.moto-sheets.com/index.php?p=manuals> site, download the files:

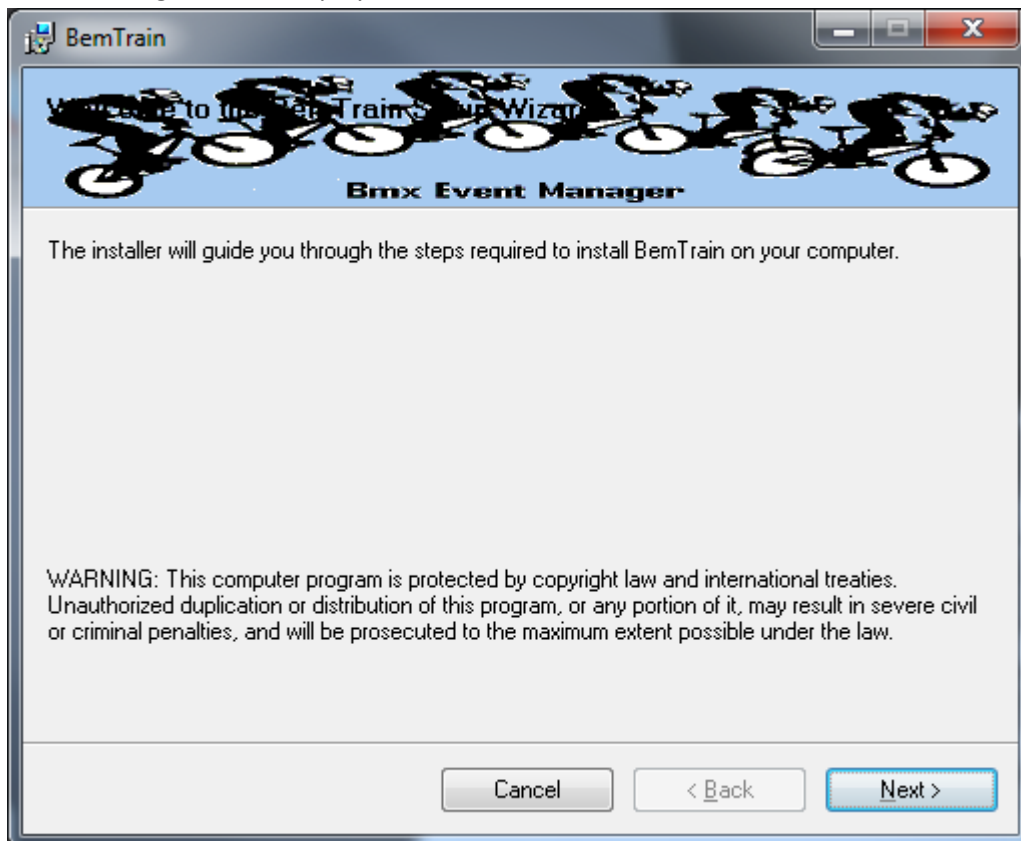
6a BemTrain Production 3-3-0 (zip file)

6b BemTrain Release and Installation Notes – Version 3-3-0 (pdf file)

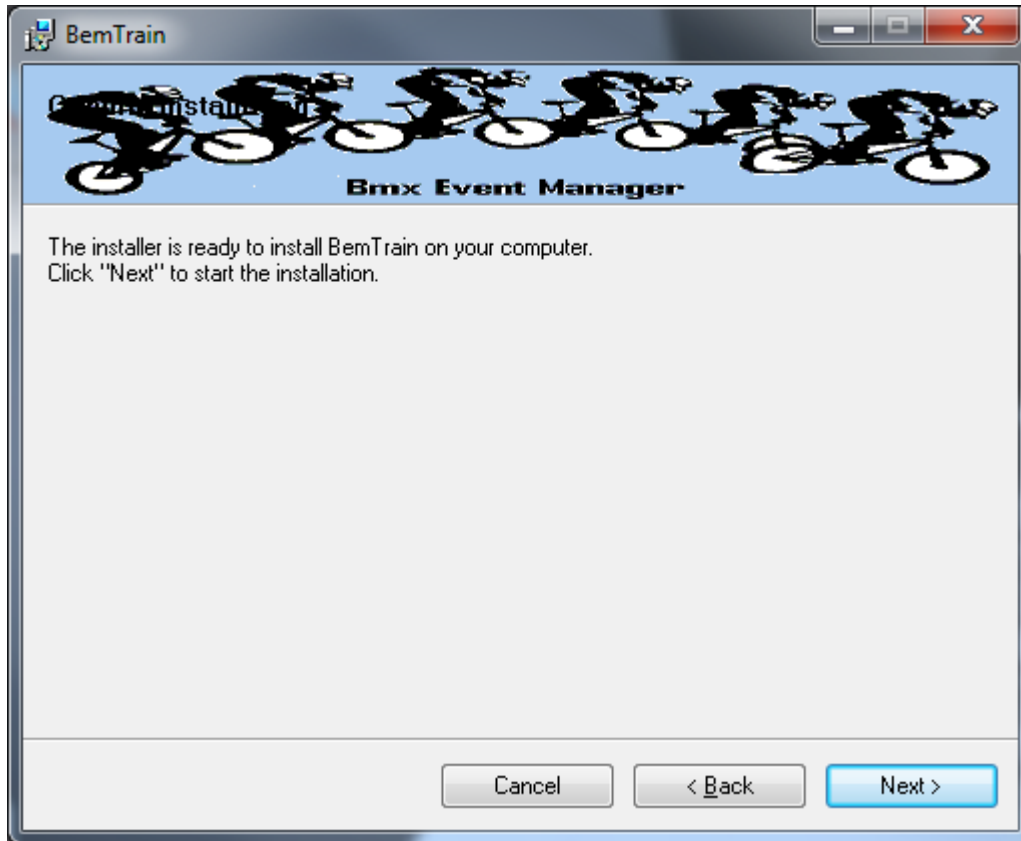
Unzip and save the **6a BemTrain Production 3-3-0.msi** file contained in the **6a BemTrain Production 3-3-0** file.

Double click on the **6a BemTrain Production 3-3-0.msi** file to start the installer.

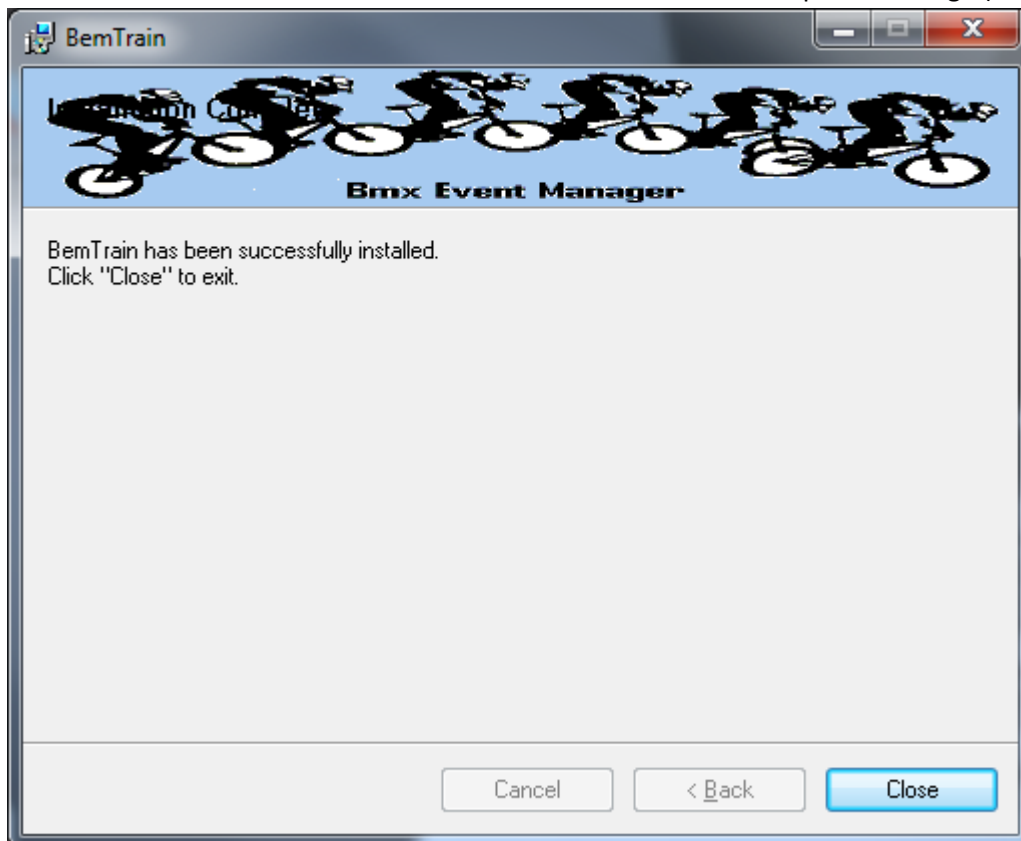
The following screen is displayed.



Click Next to proceed and the following screen is shown



Click Next to start the installation and wait for the Installation Complete Message (below)



Note that the installation is hardcoded into the folder:

C:\BEM\Programs\BemTrain

If not done previously as per step 2 on page 10 of this document, Office 2007 and Office 2010 users should include the path C:\BEM\Programs in the Excel list of trusted locations.

The installation procedure installs the BemTrain program, adds BemTrain in the Bmx Event Manager group in the Programs menu and provides a shortcut on the Desktop.



If you are installing BemTrain for the first time, please refer to the instructions in the distribution e-mail to install the configuration file.

User Logo Files.

If you have previously setup user defined logo files for display on scoreboards for BemTrain version 3.2.2.2 or earlier, then these files must be moved to a new folder for versions 3.2.2.3 and later.

I.e. if you have files named **BemTrainUser_HL_Logo.bmp** and/or **BemTrainUser_HR_Logo.bmp** in folder **C:\BEM\UserData** then please move these files to the folder

C:\BEM\UserData\BemTrain Scoreboard bmp logos

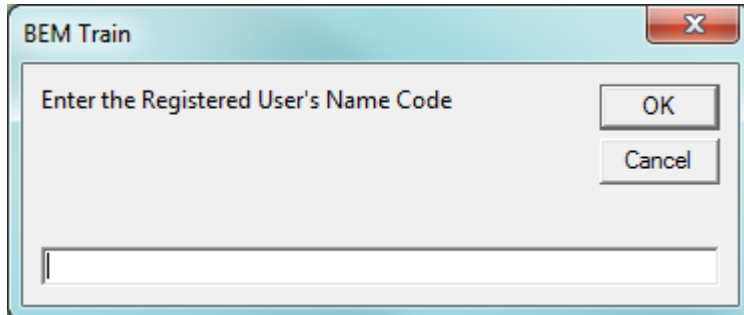


First Run Setup

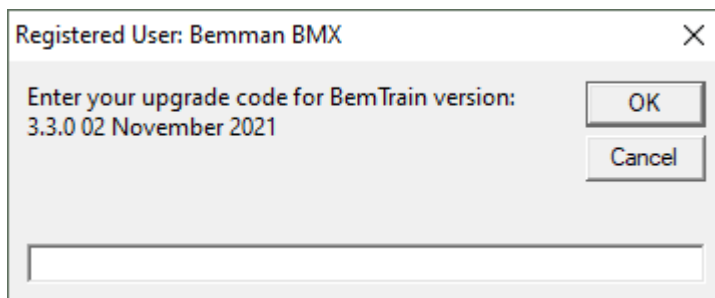
Double click on the BemTrain icon to start the program.

First time installation users will receive the following prompt to enter the Registration Name received with your order confirmation.

If you don't have this information, please contact Lyndon.Downing@bigpond.com



All users will receive the following prompt to enter the upgrade code the first time the upgrade is run:



Enter the code from your release email and click OK to activate the update.

If you don't have this information, please contact Lyndon.Downing@bigpond.com



Operating System

Windows XP, Vista (OK but best avoided if possible), Windows7 and for Windows 8, 8.1 and Windows 10, full versions, not the RT tablet versions. 32 or 64 bit installations of Windows are OK. Use of the Professional rather than the Home versions of Windows are strongly recommended for the superior networking capability.

Microsoft Office

Office 2003, Office 2007 or Office 2010.

BemTrain does not run on Office 2013 or later as Microsoft have not maintained full backwards compatibility with Office 2010, 2007 and 2003 versions.

For new PCs that come pre-installed with an Office version later than 2010, the following options are suggested.

1. If you don't have a specific requirement for the new facilities in the pre-installed version Office and haven't paid the licence fee for that:
 - a. Totally remove Office from the PC.
 - b. Buy and install a legitimate version of Office 2010 from eBay or from a download retailer such as https://www.ecrater.com.au/p/30522352/microsoft-office-2010-pro-plus-32-64-bit?gps=1&id=115926669379&keywords=&gclid=CjwKCAjwm4rqBRBUeIwAwaWjjK60coZew2EOxi9W_eodOHfGc8FKc4vya1IbS3VT41eix1YEFxqnBoCRJgQAvD_BwE
or
https://softwaregeeks.co.uk/product/office2010proplus/?gclid=EAAlQobChMI07_I7NXN4AIVGK6WCh2pWwWhEAYYBCABEgJcpvD_BwE
which will be significantly cheaper than the Office 365 / 2016 licence).
2. If you need to keep the pre-installed Office version on the PC with either Win7, Win8 or Win 10.
 - a. Do a partial installation of Office 2010 installing only Excel 2010 which will happily co-exists with later Office versions.
 - b. To get BemTrain to open with Office 2010 when you also have later Office versions installed then either:
 - i. Open Excel 2010 before clicking on the BemTrain icon.
 - ii. Set up your own shortcuts to BemTrain that direct to Office 2010.
I.e. in the Shortcut Target use

BemTrain

Typical Shortcut Target when Office 2010 is a 32 bit installation

"C:\Program Files (x86)\Microsoft Office\Office14\EXCEL.EXE" "C:\BEM\Programs\BemTrain\BemTrain.xls"

Typical Shortcut Target when Office 2010 is a 64 bit installation

"C:\Program Files\Microsoft Office\Office14\EXCEL.EXE" "C:\BEM\Programs\BemTrain\BemTrain.xls"

To add the shortcut to the start menu, copy and paste or create the shortcut in the following 'Hidden' folder:

C:\Users\username\AppData\Roaming\Microsoft\Windows\Start Menu\Programs

Now open Start Menu > All apps and locate the shortcut(s) you placed. Right-click on it and select Pin to Start.



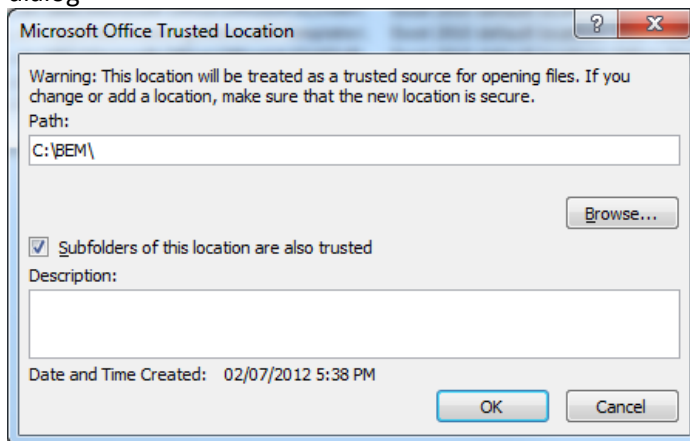
Microsoft Updates

The following preparatory actions if not already implemented on your PC will avoid compatibility problems.

1. If you do not have Windows Update enabled for Auto Update of Windows and other products from Microsoft Update, download and install the latest applicable Office 2003 / 2007 / 2010 service packs and updates. This is very important as there is a history of unpredictable operation should the latest Microsoft updates not be installed.
2. For users running Office 2007 and 2010, include the C:\BEM path and any other locations where you save BEM or BemTrain files in the list of Excel Trusted Locations.

Method:

- 2.1. Open Excel.
- 2.2. Select **File** then **Options**.
- 2.3. Select **Trust Center**.
- 2.4. Click on **Trust Center Settings...** button.
- 2.5. Click on **Add new location...** button and add any required paths and select the **Subfolders of this location are also trusted** if appropriate and then click on OK to accept and close the dialog



- 2.6. . • Click on OK to close each of the dialogs until back in Excel which now can be closed.

=== End of Document ===

